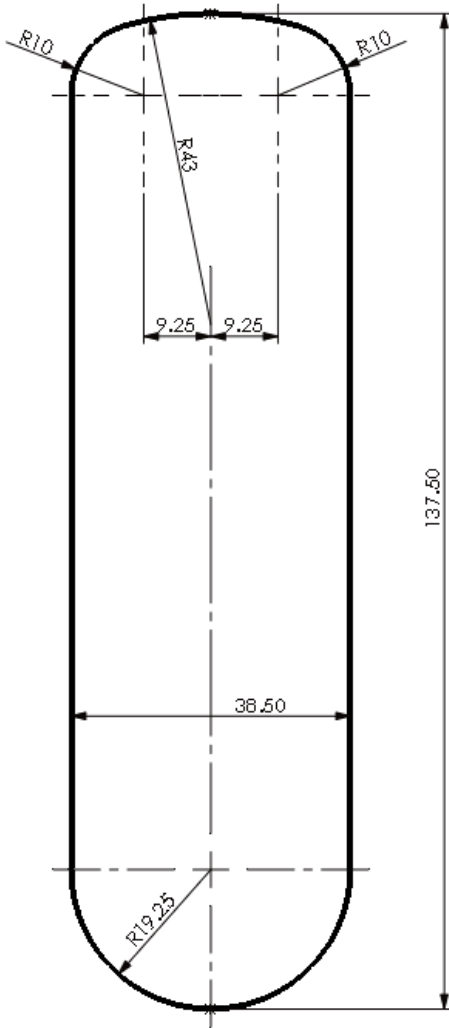


Please check that template is correct size before use – copies can be distorted



Installation Template

LOCKEY

ELECTRONIC LOCKING SYSTEM

EC-785 RFID FLUSH FIT LOCK INSTALLATION INSTRUCTIONS

IMPORTANT NOTE:

Before drilling holes, please ensure that the position of the lock when mounted will allow clearance for the cam to function.

IMPORTANT NOTE:

Before drilling fixing holes, please ensure that the position of the RFID Lock when fitted will allow clearance for the cam to function.

www.LockeyLocks.com

EC-785 RFID FLUSH FIT LOCK INSTALLATION INSTRUCTIONS

ENSURE BATTERIES ARE INSTALLED BEFORE MOUNTING

Step 1 Before installing, load the batteries and familiarize yourself with the operation and programming of the lock. Refer to the programming and operating instructions for guidance.

Step 2 Load the 2 x AA Batteries and secure Battery Cover to lock body using M4 x 10mm screw provided. **Failure to use the Battery Cover will allow the batteries to fall out of the lock if the door is slammed.**

Step 3 Cut hole in door using the template or dimensional data provided, ensuring that the position of the RFID Lock will allow clearance for selected cam to work. **If using the template, please ensure that it is the correct size. Copies may be distorted.**

Step 4 Pass the RFID Lock through the hole from the front of the door.

Step 5 Mount the Plastic Clamp Box over the rear of the RFID Lock.

Step 6 Using 2 x M4 Screws of the appropriate length (refer to data sheets for correct screw lengths), tighten the upper and lower screws.

Step 7 Select the desired cam and attach it to the square shaft at the end of the barrel using a M4 x 8 screw and Domed Washer.

Step 8 Now check the operation of the lock using one of the Master or User cards.

IMPORTANT

Keep your Master Card safe.

In the wrong hands it is a serious security risk and it is NOT possible to re-program the lock without it.

