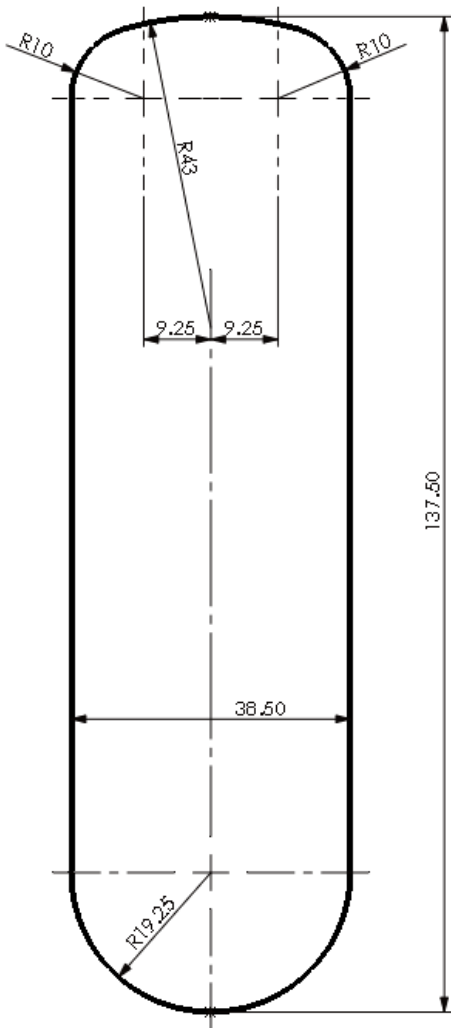


Please check that template is correct size before use – copies can be distorted



Installation Template

**IMPORTANT NOTE:**

Before drilling holes, please ensure that the position of the lock will allow clearance for the cam to function.

# LOCKEY

*ELECTRONIC LOCKING SYSTEM*

**EC-784 Digital Combination Lock  
INSTALLATION INSTRUCTIONS**

**IMPORTANT NOTE:**

Before drilling holes, please ensure that the position of the lock when mounted will allow clearance for the cam to function.

[www.LockeyLocks.com](http://www.LockeyLocks.com)

# EC-784 Flush Fit Digital Combination Lock INSTALLATION INSTRUCTIONS

## **ENSURE BATTERIES ARE INSTALLED BEFORE MOUNTING**

**Step 1** Before installing, familiarize yourself with the operation and programming of the lock. (See Programming Guide).

**Step 2** Load the 2 x AA Batteries and secure Battery Cover to lock body using M4 x 10mm screw provided. Tighten.  
**Failure to use the Battery Cover will allow the batteries to fall out of the lock if the door is slammed.**

**Step 3** Cut hole in door using the template or dimensional data provided, ensuring that the position of the lock will allow clearance for selected cam to work.

**If using the template, please ensure that it is the correct size. Copies may be distorted.**

**Step 4** Pass the lock through the hole from the front of the door.

**Step 5** Mount the Plastic Clamp Box over the rear of the lock.

**Step 6** Using 2 x M4 Screws of the appropriate length (refer to data sheets for correct screw lengths), tighten the upper and lower screws.

**Step 7** Select the desired cam and attach it to the square shaft at the end of the barrel using a M4 x 8 screw and Domed Washer.

**Step 8** Check the operation of the lock using the factory User Code.

**Step 9** If the lock is functioning correctly, CHANGE THE DEFAULT MASTER CODE and DEFAULT USER CODE and program the lock using the programming and operating instructions.

### **IMPORTANT -**

**All LockeyUSA Electronic Cabinet & Locker Locks are manufactured with a common Master Code. For security reasons, this must be changed prior to use. Keep a note of your new Master Code - it is NOT possible to re-program the lock without it.**

