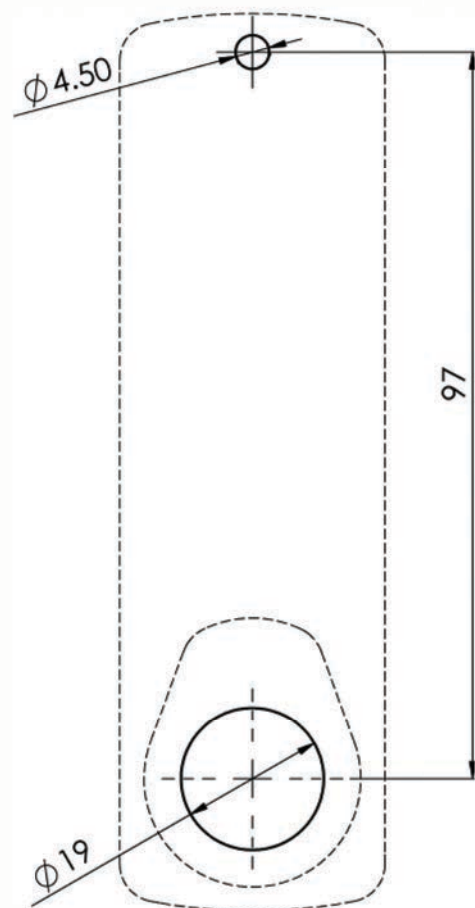




INSTALLATION INSTRUCTIONS

EC950 Horizon

Surface Mounted Electronic
Combination Locks



Please check that template
is correct size before use –
copies can be distorted

IMPORTANT NOTE

Before drilling mounting holes, please ensure that the position of the lock when mounted will allow clearance for the cam to function.

LockeyUSA
4245 S. Lincoln Rd.
Mt. Pleasant, MI 48858

T: 888.395.0163
E: info@lockeyusa.com
W: www.lockeyusa.com

9224611 - Horizon Surface Installation Instructions -

www.lockeyusa.com

INSTALLATION INSTRUCTIONS

EC950 – Horizon Flush Mounting

Mounting Instructions

The Horizon can be mounted to cupboards, cabinets and lockers etc. as an original or as a direct replacement for existing cam locks.

Special Notes

Before installing the lock, load the battery and familiarize yourself with the operation and programming.

Unless manufactured to special order, the lock is supplied in the "PRIVATE" operating mode with a four-digit code. In this mode, the user must enter a four-digit User Code to open it. The unit will re-lock itself once open. The lock can be opened at any time using the Master Code. Unless manufactured to special order:

The default Master Code is **11 33 55 77** and the default User Code is 22 44.

These codes are common to all standard locks and it is very important that you set your own personal Master and User Codes. Your lock is not secure until you have changed the default Master Code and User Code.

Keep a safe record of your master code as it is not possible to make any programming changes without it.

Please see programming guide to set your own codes.

Installation Guide

ENSURE BATTERY IS INSTALLED BEFORE MOUNTING

- Step 1** Place template on door and mark ONE 4.5mm (3/16") hole and ONE 19mm (3/4") hole in the handle position. (See installation template for details)
- Step 2** Drill both mounting holes.
- Step 3** Fit the trim ring to the lock ensuring that the slightly thinner side of the ring goes onto the lock first.
- Step 4** Hold the lock to the door and pass the threaded spindle through the 19mm (3/4") hole.
- Step 5** Fit and tighten the mounting nut and mounting screw. The length of the screw should be selected according to the door panel thickness to give a nominal insertion depth of 8mm into the lock.
- Step 6** Select the cam which suits your door and frame and attach it to the square shaft at the end of the spindle using the M4 x 8 patch screw and flat washer provided.
- Step 7** Check the operation using the factory User Code 22 44.
- Step 8** If the lock is functioning correctly, **CHANGE THE DEFAULT MASTER CODE (11 33 55 77) and DEFAULT USER CODE (22 44)** and program the lock using the instructions enclosed.

Inserting Battery

- Step 1 Remove all packaging.
- Step 2 Insert battery CR123. As shown.
- Step 3 Secure battery with battery cover.
- Step 4 M4 screw

