



2022 PRODUCT CATALOG

Mechanical Locks

Gate & Panic Hardware

Electronic Locks





LockeyUSA™ offers a vast selection of door and gate security hardware including keyless locks, hydraulic gate closers and panic hardware. LockeyUSA products provide security and convenience for an extensive range of commercial and residential applications. Motivated by a desire to meet customer needs and exceed expectations, LockeyUSA is inspired to create innovative access control products of the highest standard and greatest value.

lockeyusa.com | info@lockeyusa.com

888.395.0163 | 3505 Cragmont Dr. Tampa, FL 33619

Cover photo courtesy of AGF Custom Metal Concepts

TABLE OF CONTENTS

Quick Guide	4
New Products	5

MECHANICAL LOCKS

C Series	6
M Series	8
1000 Series	11
2000 Series	13
2900 Narrow Stile Series	18
3000 Series	22
SUMO™ GL2	25
Specialty Locks	26
Accessories	27

GATE & PANIC HARDWARE

Gate Adapters	28
Gate Boxes	28
Gate Closers	30
Gate Closer Accessories	33
Gate & Panic Hardware	34
Panic Shields	35
Panic Bars	36
Panic Trims	37
Trim Boxes	38
Panic Hardware Accessories	38
Panic Shields Kits	39
Panic Shield Comparison Chart	50

ELECTRONIC LOCKS

Electronic Locks	51
WiFi Locks	52
Electronic Cabinet Locks	53
Warranty Statements	55

QUICK GUIDE



DC – DOUBLE COMBINATION

Most LockeyUSA Mechanical Keyless Locks are available in Double Combination (DC). DC locks have a combination body on both the interior and exterior and require a code to unlock from both the interior and exterior.

KO – KEY OVERRIDE

Many of our products are available in Key Override (KO). Please note the warranty on Key Override locks differs from our standard mechanical lock warranty. For warranty statements, visit LockeyUSA.com/warranty

MG – MARINE GRADE

We offer two marine grade finishes, Jet Black Marine Grade (JBMG) and Satin Chrome Marine Grade (SCMG), which are designed to extend the life of the finish when exposed to corrosive elements of coastal/saltwater environments.

HOW TO ORDER A PANIC SHIELD KIT



STYLE

PS: Standard
ED: Edge



KIT*

4: Value
5: Safety
6: Security



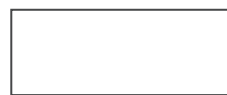
BAR**

0: No Bar
1: PB1100
2: Detex V-40
3: Detex V40xEBxW
4: PB2500
5: PB2500ALARM



SHIELD COLOR

S: Silver
B: Black



OPTIONAL PANIC BAR UPGRADE (SELECT ONE ONLY)

PB1100

L: 42" Bar
M: Stainless Steel
F: Fire Rated
LM: 42" Stainless Bar

DETEX V-40

L: 42" Bar
M: Stainless Steel
F: Fire Rated
LM: 42" Stainless Bar

***WHATS INCLUDED?** (4) Value Kits: Shield, Bar, Strike Bracket. (5) Safety Kits: Shield, Bar, Strike Bracket, Key Box, Keyed Cylinder. (6) Security Kits: Shield, Bar, Strike Bracket, Gate Box, 285-P, Max Guard. ALL EDGE STYLE KITS INCLUDE LATCH PROTECTOR AND JAMB STOP

****For standard 36" doors/gates.**

PB2500 & PB2500AL

L: 42" Bar

DETEX V-40xEBxW

L: 42" Bar
7: Black V-40xEB
L7: 42" Black V-40xEB

INSTRUCTIONS LockeyUSA highly recommends reviewing product instruction documents prior to purchase and installation. Visit the specific product page of our website for complete product details including instruction documents or view all instructions and available videos at lockeyusa.com/resources

TROUBLESHOOTING If you're still having trouble after reviewing instruction documents, contact our technical support team. Our team can be reached at 888.395.0163, info@lockeyusa.com or by filling out the contact form at lockeyusa.com/contact-us

REPLACEMENT PARTS To obtain replacement parts for a LockeyUSA product, visit lockeyparts.com or contact the company you originally purchased from.

WHERE TO BUY

Find a Distributor: LockeyUSA.com/find-a-distributor

Find an Online Retailer: LockeyUSA.com/online-retailers



NEW! 2835-ADAPTER

LockeyUSA™ is proud to introduce its latest innovation, the 2835-Adapter for Vinyl and Ornamental Gates. The 2835-Adapter brings the security, convenience, and reliability of LockeyUSA mechanical keyless locks to the gate without the need for a gate box or welding. Thick posts are no match for the 2835-Adapter, as it installs on gates 1.75"-5" thick without the need for an extension kit.

Features & Benefits

- Compatible with
 - 2835 Mechanical Keyless Lever Lock
 - 2830 Mechanical Keyless Knob Lock (lock sold separately)
- 2830/2835: Auto-locking with Passage Function
- No need for a gate box or welding
- Ideal for vinyl and ornamental gates
- Reversible Handing

Dimensions & Specifications

- Dimensions: 5.1" x 5.6" x 1.5"
- Gate Thickness: 1.75" to 5"
- Gate Gap: .4" to 1.5"
- Material: Glass-filled nylon outer housing and zinc alloy plate
- Color: Black
- For Exterior & Interior Use
- Weather Resistant

C120 MECHANICAL KEYLESS SURFACE MOUNT LOCK

- Mechanical, keyless, surface mount deadbolt
- Reversible long/short bar
- One User Code (changeable)
- Low profile
- Ideal for cabinets



SHOWN IN SATIN CHROME MARINE GRADE

Part Number	Description
C120-(finish)	Mechanical Keyless Surface Mount Lock

Available Finishes : Antique Brass (AB), Bright Brass (BB), Jet Black Marine Grade (JBMG), Oil Rubbed Bronze (OIL), Satin Chrome Marine Grade (SCMG), Satin Nickel (SN), White (WH)

Dimensions & Specs : OUTSIDE BODY DIMENSIONS: 5" L X 1 1/4" W X 1 7/8" D, INSIDE BODY DIMENSIONS: 5" L X 1 1/4" W X 1 3/8" D, DEADBOLT THROW: 3/4", DOOR THICKNESS: 1 3/16" TO 2", FITS DOORS FROM 1/8" THICK AND UP WITH THIN DOOR KIT (SOLD SEPARATELY), FITS DOORS UP TO 5" THICK WITH EXTENSION KIT (SOLD SEPARATELY), MATERIAL: ZINC-PLATED STEEL WITH TEFLON COATED STAINLESS STEEL INTERIOR COMPONENTS, FOR EXTERIOR & INTERIOR USE.

Compatible with : C25 Pull Handle

C150 MECHANICAL KEYLESS HOOK BOLT LOCK

- Mechanical, keyless, hook bolt
- Surface mount lock
- One User Code (changeable)
- Low profile
- Ideal for sliding glass patio doors



SHOWN IN SATIN CHROME MARINE GRADE

Part Number	Description
C150-(finish)	Mechanical Keyless Hook Bolt Lock

Available Finishes : Antique Brass (AB), Bright Brass (BB), Jet Black Marine Grade (JBMG), Oil Rubbed Bronze (OIL), Satin Chrome Marine Grade (SCMG), Satin Nickel (SN), White (WH)

Dimensions & Specs : OUTSIDE BODY DIMENSIONS: 5" L X 1 1/4" W X 1 7/8" D, INSIDE BODY DIMENSIONS: 5" L X 1 1/4" W X 1 5/8" D, THROW: 3/8", DOOR THICKNESS: 1 3/16" TO 2", FITS DOORS FROM 1/8" THICK AND UP WITH THIN DOOR KIT (SOLD SEPARATELY), FITS DOORS UP TO 5" THICK WITH EXTENSION KIT (SOLD SEPARATELY), MATERIAL: ZINC-PLATED STEEL WITH TEFLON COATED STAINLESS STEEL INTERIOR COMPONENTS, FOR EXTERIOR & INTERIOR USE.

Compatible with : C25 Pull Handle

C170 MECHANICAL KEYLESS CAM CABINET LOCK

- Mechanical, keyless, push button lock
- Surface mount cam lock
- One User Code (changeable)
- Low profile
- Ideal for cabinet doors



SHOWN IN
SATIN CHROME
MARINE GRADE

Part Number	Description
C170-(finish)	Mechanical Keyless Cam Cabinet Lock

Available Finishes : Antique Brass (AB), Bright Brass (BB), Jet Black Marine Grade (JBMG), Oil Rubbed Bronze (OIL), Satin Chrome Marine Grade (SCMG), Satin Nickel (SN), White (WH)

Dimensions & Specs : OUTSIDE BODY DIMENSIONS: 5" L X 1 1/4" W X 1 7/8" D, INSIDE BODY DIMENSIONS: 5" L X 1 1/4" W X 1 1/4" D, THROW: 3/8", DOOR THICKNESS: 1 3/16" TO 2", FITS DOORS FROM 1/8" THICK AND UP WITH THIN DOOR KIT (SOLD SEPARATELY), FITS DOORS UP TO 5" THICK WITH EXTENSION KIT (SOLD SEPARATELY), MATERIAL: ZINC-PLATED STEEL WITH TEFLON COATED STAINLESS STEEL INTERIOR COMPONENTS, FOR EXTERIOR & INTERIOR USE.

Compatible with : C25 Pull Handle

C25 PULL HANDLE

- Pull handle for C Series Locks



Part Number	Description
C25-(finish)	Pull handle for C Series Locks

Available Finishes : Antique Brass (AB), Bright Brass (BB), Jet Black Marine Grade (JBMG), Oil Rubbed Bronze (OB), Satin Chrome Marine Grade (SCMG), Satin Nickel (SN), White (WH)

Dimensions & Specs : 8 1/2" L X 1 1/4" W X 1 5/8" D

Compatible with : C120, C150, C170

M210 MECHANICAL KEYLESS DEADBOLT

- Mechanical, keyless, deadbolt lock
- Thumb turn on exterior and interior
- One User Code (changeable)
- Reversible handing
- Adjustable backset deadbolt
- EZ plates (metal trim plates) included- installs in minutes with no drilling on doors with an existing 2 1/8" deadbolt hole



SHOWN IN
WHITE



SINGLE COMBINATION

Part Number	Description
M210-(finish)	Mechanical Keyless Deadbolt, single combination



DOUBLE COMBINATION

Part Number	Description
M210-(finish)-DC	Mechanical Keyless Deadbolt, double combination

Available Finishes : Antique Brass (AB), Bright Brass (BB), Bright Chrome (BC), Jet Black Marine Grade (JBMG), Oil Rubbed Bronze (OIL), Satin Brass (SB)*, Satin Chrome Marine Grade (SCMG), Satin Nickel (SN), White (WH) *Satin Brass only available in Single Combination

Dimensions & Specs : 5" L X 1 1/2" W X 1 7/8" D, TOTAL COVERAGE WITH TRIM PLATES: 5 5/8" L X 2 1/2" W, DOOR THICKNESS: 1 1/8" TO 2", FITS DOORS UP TO 5" WITH EXTENSION KIT (SOLD SEPARATELY), MATERIAL: ZINC-PLATED STEEL WITH TEFLON COATED STAINLESS STEEL INTERIOR COMPONENTS, FOR EXTERIOR & INTERIOR USE.

Compatible with : GB210, GB200M, GB-ADD-A-BOLT



M220
MECHANICAL
KEYLESS SURFACE
MOUNT DEADBOLT

M220 MECHANICAL KEYLESS SURFACE MOUNT DEADBOLT

- Surface/rim mounted deadbolt
- Reversible long/short bar
- One User Code (changeable)
- Works on most hinged configurations
- Ideal for narrow stile doors and light-duty applications



SHOWN IN SATIN CHROME MARINE GRADE

Part Number	Description
M220-(finish)	Mechanical Keyless Surface Mount Deadbolt

Available Finishes : Antique Brass (AB), Bright Brass (BB), Jet Black Marine Grade (JBMG), Satin Chrome Marine Grade (SCMG), Satin Nickel (SN), White (WH)

Dimensions & Specs : 5" L X 1 1/2" W X 1 7/8" D, DEADBOLT THROW: 3/4", DOOR THICKNESS: 1 1/8" TO 2", FITS DOORS UP TO 5" WITH EXTENSION KIT (SOLD SEPARATELY), MATERIAL: ZINC-PLATED STEEL WITH TEFLON COATED STAINLESS STEEL INTERIOR COMPONENTS, FOR EXTERIOR & INTERIOR USE.

M230 MECHANICAL KEYLESS DEADLOCKING SPRING LATCH

- Mechanical, keyless deadlocking spring latch lock
- Auto-locking
- One User Code (changeable)
- Knob on interior and exterior
- Covers 2 1/8" prep hole



SHOWN IN
SATIN CHROME
MARINE GRADE



SINGLE COMBINATION

Part Number	Description
M230-(finish)	Mechanical Keyless Deadlocking Spring Latch, single combination



DOUBLE COMBINATION

Part Number	Description
M230-(finish)-DC	Mechanical Keyless Deadlocking Spring Latch, double combination

Available Finishes : Antique Brass (AB), Bright Brass (BB), Jet Black Marine Grade (JBMG), Oil Rubbed Bronze (OIL), Satin Chrome Marine Grade (SCMG), Satin Nickel (SN), White (WH)

Dimensions & Specs : OUTSIDE BODY DIMENSIONS: 5" L X 1 1/4" W X 1 7/8" D, INSIDE BODY DIMENSIONS: 5" L X 1 1/4" W X 1 1/4" D, THROW: 3/8", DOOR THICKNESS: 1 3/16" TO 2", FITS DOORS FROM 1/8" THICK AND UP WITH THIN DOOR KIT (SOLD SEPARATELY), FITS DOORS UP TO 5" THICK WITH EXTENSION KIT (SOLD SEPARATELY), MATERIAL: ZINC-PLATED STEEL WITH TEFLON COATED STAINLESS STEEL INTERIOR COMPONENTS, FOR EXTERIOR & INTERIOR USE.

Compatible with : GB200M

1150 MECHANICAL KEYLESS HEAVY DUTY LEVER LOCK

- Mechanical, keyless, heavy duty lever lock
- Auto-locking with passage function
- One User Code (changeable)
- Adjustable backset deadlocking spring latch



SHOWN IN
SATIN CHROME
MARINE GRADE



SINGLE COMBINATION

Part Number	Description
1150-(finish)	Mechanical Keyless Heavy Duty Lever Lock, single combination



DOUBLE COMBINATION

Part Number	Description
1150-(finish)-DC	Mechanical Keyless Heavy Duty Lever Lock, double combination

Available Finishes : Jet Black Marine Grade (JBMG), Oil Rubbed Bronze (OIL), Satin Chrome Marine Grade (SCMG)

Dimensions & Specs : 7 5/16" L X 2 3/16" W X 2 5/16" D, TOTAL COVERAGE WITH TRIM PLATES: 7 1/2" L X 2 1/2" W X 2 1/2" D, LEVER SIZE: 5/8" L X 5" W, DOOR THICKNESS: 1 1/8" TO 2", FITS DOORS UP TO 5" WITH EXTENSION KIT (SOLD SEPARATELY), MATERIAL: ZINC-PLATED STEEL WITH TEFLON COATED STAINLESS STEEL INTERIOR COMPONENTS, FOR EXTERIOR & INTERIOR USE.

Compatible with : GB1150 Gate Box, 1600 Knob

1600 MECHANICAL KEYLESS HEAVY DUTY KNOB LOCK

- Mechanical, keyless, heavy duty knob lock
- Auto-locking with passage function
- One User Code (changeable)
- Adjustable backset deadlocking spring latch



SHOWN IN
JET BLACK



SINGLE COMBINATION

Part Number	Description
1600-(finish)	Mechanical Keyless Heavy Duty Knob Lock, single combination



DOUBLE COMBINATION

Part Number	Description
1600-(finish)-DC	Mechanical Keyless Heavy Duty Knob Lock, double combination

Available Finishes : Jet Black Marine Grade (JBMG), Oil Rubbed Bronze (OIL), Satin Chrome Marine Grade (SCMG)

Dimensions & Specs : 7 5/16" L X 2 3/16" W X 2 11/16" D, TOTAL COVERAGE WITH TRIM PLATES: 7 1/2" L X 2 1/2" W X 2 7/2" D, KNOB SIZE: 2" DIAMETER, DOOR THICKNESS: 1 1/8" TO 2", FITS DOORS UP TO 5" WITH EXTENSION KIT (SOLD SEPARATELY), MATERIAL: ZINC-PLATED STEEL WITH TEFLON COATED STAINLESS STEEL INTERIOR COMPONENTS, FOR EXTERIOR & INTERIOR USE.

Compatible with : GB1150 Gate Box, 1150 Lever

2200 MECHANICAL KEYLESS SURFACE MOUNT DEADBOLT

- Surface mount deadbolt/slide bolt
- Narrow stile
- One User Code (changeable)
- Long and short bar included
- Works on most hinged configurations



SHOWN IN
SATIN NICKEL

Part Number	Description
2200-(finish)	Mechanical Keyless Surface Mount Deadbolt

Available Finishes : Antique Brass (AB), Bright Brass (BB), Jet Black Marine Grade (JBMG), Satin Chrome Marine Grade (SCMG), Satin Nickel (SN), White (WH)

Dimensions & Specs : 5 5/8" L X 1 5/8" W X 1 5/8" D, TOTAL COVERAGE WITH TRIM PLATES: 6" L X 2" W, DEADBOLT THROW: 3/4", SHORT BAR LENGTH: 7/8", LONG BAR LENGTH: 2 1/4", DOOR THICKNESS: 1 1/8" TO 2", FITS DOORS UP TO 5" WITH EXTENSION KIT (SOLD SEPARATELY), MATERIAL: ZINC-PLATED STEEL WITH TEFLON COATED STAINLESS STEEL INTERIOR COMPONENTS, FOR EXTERIOR & INTERIOR USE.

Compatible with : Key Override System (KOS)

2200KO MECHANICAL SURFACE MOUNT DEADBOLT WITH KEY OVERRIDE

- Surface mount deadbolt/slide bolt with key override
- Narrow stile
- One User Code (changeable)
- Long and short bar included
- Works on most hinged configurations
- Available keyed alike or keyed different



SHOWN IN
SATIN CHROME
MARINE GRADE

Part Number	Description
2200-(finish)-KO	Mechanical Surface Mount Deadbolt with Key Override

Available Finishes : Antique Brass (AB), Bright Brass (BB), Jet Black Marine Grade (JBMG), Satin Chrome Marine Grade (SCMG), Satin Nickel (SN), White (WH)

Dimensions & Specs : 5 5/8" L X 1 5/8" W X 1 5/8" D, TOTAL COVERAGE WITH TRIM PLATES: 6" L X 2" W, DEADBOLT THROW: 3/4", SHORT BAR LENGTH: 7/8", LONG BAR LENGTH: 2 1/4", DOOR THICKNESS: 1 1/8" TO 2", FITS DOORS UP TO 5" WITH EXTENSION KIT (SOLD SEPARATELY), MATERIAL: ZINC-PLATED STEEL WITH TEFLON COATED STAINLESS STEEL INTERIOR COMPONENTS, FOR EXTERIOR & INTERIOR USE.

2210 MECHANICAL KEYLESS DEADBOLT

- Mechanical, keyless, deadbolt lock
- Knob on exterior, thumb turn on interior
- One User Code (changeable)
- Reversible handing
- Adjustable backset deadbolt



SHOWN IN
OIL RUBBED
BRONZE



SINGLE COMBINATION

Part Number	Description
2210-(finish)	Mechanical Keyless Deadbolt, single combination

DOUBLE COMBINATION

Part Number	Description
2210-(finish)-DC	Mechanical Keyless Deadbolt, double combination

Available Finishes : Antique Brass (AB), Bright Brass (BB), Bright Chrome (BC), Jet Black Marine Grade (JBMG), Oil Rubbed Bronze (OIL), Satin Chrome Marine Grade (SCMG), Satin Nickel (SN), White (WH)

Dimensions & Specs : 5 5/8" L X 1 5/8" W X 1 5/8" D, TOTAL COVERAGE WITH TRIM PLATES: 6 1/2" L X 2 1/2" W, DOOR THICKNESS: 1 1/8" TO 2", FITS DOORS UP TO 5" WITH EXTENSION KIT (SOLD SEPARATELY), MATERIAL: ZINC-PLATED STEEL WITH TEFLON COATED STAINLESS STEEL INTERIOR COMPONENTS, FOR EXTERIOR & INTERIOR USE.

Compatible with : GB2500 Gate Box, Key Override System (KOS)

2210KO MECHANICAL KEYLESS DEADBOLT WITH KEY OVERRIDE

- Mechanical, deadbolt lock with key override
- Knob on exterior, thumb turn on interior
- One User Code (changeable)
- Reversible handing
- Adjustable backset deadbolt
- Available keyed alike or keyed different



2210-KO



2210-DC-KO



SINGLE COMBINATION

Part Number	Description
2210-(finish)-KO	Mechanical Deadbolt with Key Override, single combination

DOUBLE COMBINATION

Part Number	Description
2210-(finish)-DC-KO	Mechanical Deadbolt with Key Override, double combination

Available Finishes : Antique Brass (AB), Bright Brass (BB), Bright Chrome (BC), Jet Black Marine Grade (JBMG), Oil Rubbed Bronze (OIL), Satin Chrome Marine Grade (SCMG), Satin Nickel (SN), White (WH)

Dimensions & Specs : 5 5/8" L X 1 5/8" W X 1 5/8" D, TOTAL COVERAGE WITH TRIM PLATES: 6 1/2" L X 2 1/2" W, DOOR THICKNESS: 1 1/8" TO 2", FITS DOORS UP TO 5" WITH EXTENSION KIT (SOLD SEPARATELY), MATERIAL: ZINC-PLATED STEEL WITH TEFLON COATED STAINLESS STEEL INTERIOR COMPONENTS, FOR EXTERIOR & INTERIOR USE.

2500 MECHANICAL KEYLESS SURFACE MOUNT HOOK BOLT

- Mechanical, keyless hook bolt lock
- Knob on exterior, thumb turn on interior
- One User Code (changeable)
- Reversible handing
- Designed for sliding doors



SHOWN IN SATIN CHROME MARINE GRADE

Part Number	Description
2500-(finish)	Mechanical Keyless Surface Mount Hook Bolt

Available Finishes : Antique Brass (AB), Bright Brass (BB), Jet Black Marine Grade (JBMG), Satin Chrome Marine Grade (SCMG), Satin Nickel (SN), White (WH)

Dimensions & Specs : 5 5/8" L X 1 5/8" W X 1 5/8" D, TOTAL COVERAGE WITH TRIM PLATES: 6" L X 2" W, THROW: 3/8", DOOR THICKNESS: 1 1/8" TO 2", FITS DOORS UP TO 5" WITH EXTENSION KIT (SOLD SEPARATELY), MATERIAL: ZINC-PLATED STEEL WITH TEFLON COATED STAINLESS STEEL INTERIOR COMPONENTS, FOR EXTERIOR & INTERIOR USE.

2500KO MECHANICAL KEYLESS SURFACE MOUNT HOOK BOLT WITH KEY OVERRIDE

- Mechanical, hook bolt lock with key override
- Knob on exterior, thumb turn on interior
- One User Code (changeable)
- Reversible handing
- Designed for sliding doors
- Available keyed alike or keyed different



Part Number	Description
2500-(finish)-KO	Mechanical Surface Mount Hook Bolt with Key Override

Available Finishes : Antique Brass (AB), Bright Brass (BB), Jet Black Marine Grade (JBMG), Satin Chrome Marine Grade (SCMG), Satin Nickel (SN), White (WH)

Dimensions & Specs : 5 5/8" L X 1 5/8" W X 2 1/8" D, TOTAL COVERAGE WITH TRIM PLATES: 6" L X 2" W, THROW: 3/8", DOOR THICKNESS: 1 1/8" TO 2", FITS DOORS UP TO 3" WITH EXTENSION KIT (SOLD SEPARATELY), MATERIAL: ZINC-PLATED STEEL WITH TEFLON COATED STAINLESS STEEL INTERIOR COMPONENTS, FOR EXTERIOR & INTERIOR USE.

2830 MECHANICAL KEYLESS KNOB LOCK WITH PASSAGE FUNCTION

- Mechanical, keyless lock
- Knob on exterior and interior
- One User Code (changeable)
- Reversible handing
- Auto-locking with passage function



SHOWN IN
BRIGHT CHROME



SINGLE COMBINATION

Part Number	Description
2830-(finish)	Mechanical Keyless Knob Lock with Passage Function, single combination



DOUBLE COMBINATION

Part Number	Description
2830-(finish)-DC	Mechanical Keyless Knob Lock with Passage Function, double combination

Available Finishes : Antique Brass (AB), Bright Brass (BB), Bright Chrome (BC), Jet Black Marine Grade (JBMG), Oil Rubbed Bronze (OIL), Satin Chrome Marine Grade (SCMG), Satin Nickel (SN), White (WH)

Dimensions & Specs : 5 5/8" L X 1 5/8" W X 2 1/4" D, TOTAL COVERAGE WITH TRIM PLATES: 6 1/2" L X 2 1/2" W, DOOR THICKNESS: 1 1/8" TO 2", FITS DOORS UP TO 5" WITH EXTENSION KIT (SOLD SEPARATELY), MATERIAL: ZINC-PLATED STEEL WITH TEFLON COATED STAINLESS STEEL INTERIOR COMPONENTS, FOR EXTERIOR & INTERIOR USE.

Compatible with : GB2500 Gate Box, Key Override System (KOS), 2835-Adapter, 2835 Lever

2835 MECHANICAL KEYLESS LEVER LOCK WITH PASSAGE FUNCTION

- Mechanical, keyless lock
- Lever on exterior and interior
- One User Code (changeable)
- Reversible handing
- Auto-locking with passage function



SHOWN IN
SATIN CHROME
MARINE GRADE



SINGLE COMBINATION

Part Number	Description
2835-(finish)	Mechanical Keyless Lever Lock with Passage Function, single combination



DOUBLE COMBINATION

Part Number	Description
2835-(finish)-DC	Mechanical Keyless Lever Lock with Passage Function, double combination

Available Finishes : Antique Brass (AB), Bright Brass (BB), Bright Chrome (BC), Jet Black Marine Grade (JBMG), Oil Rubbed Bronze (OIL), Satin Chrome Marine Grade (SCMG), Satin Nickel (SN), White (WH)

Dimensions & Specs : 5 5/8" L X 1 5/8" W X 2 1/4" D, TOTAL COVERAGE WITH TRIM PLATES: 6 1/2" L X 2 1/2" W, LEVER SIZE: 4" W X 1" H, DOOR THICKNESS: 1 1/8" TO 2", FITS DOORS UP TO 5" WITH EXTENSION KIT (SOLD SEPARATELY), MATERIAL: ZINC-PLATED STEEL WITH TEFLON COATED STAINLESS STEEL INTERIOR COMPONENTS, FOR EXTERIOR & INTERIOR USE.

Compatible with : GB2500 Gate Box, Key Override System (KOS), 2835-Adapter, 2830 Knob

2900 MECHANICAL KEYLESS NARROW STILE DEADBOLT LOCK

- Mechanical, keyless narrow stile deadbolt lock
- Knob on exterior, thumb turn on interior
- One User Code (changeable)
- 1 1/8" Backset Latch, replaces Adams-Rite style locks
- Ideal for aluminum storefront doors and gates



SHOWN IN
SATIN CHROME
MARINE GRADE



SINGLE COMBINATION

Part Number	Description
2900-(finish)	Mechanical Keyless Narrow Stile Deadbolt Lock, single combination



DOUBLE COMBINATION

Part Number	Description
2900-(finish)-DC	Mechanical Keyless Narrow Stile Deadbolt Lock, double combination

Available Finishes : Antique Brass (AB), Bright Brass (BB), Bright Chrome (BC), Jet Black Marine Grade (JBMG), Oil Rubbed Bronze (OIL), Satin Chrome Marine Grade (SCMG), Satin Nickel (SN), White (WH)

Dimensions & Specs : 5 5/8" L X 1 5/8" W X 1 5/8" D, TOTAL COVERAGE WITH TRIM PLATES: 6" L X 2" W, DOOR THICKNESS: 1 1/8" TO 2", FITS DOORS UP TO 5" WITH EXTENSION KIT (SOLD SEPARATELY), MATERIAL: ZINC-PLATED STEEL WITH TEFLON COATED STAINLESS STEEL INTERIOR COMPONENTS, FOR EXTERIOR & INTERIOR USE.

Compatible with : GB900+, GB2900LINX, SB2900

2930 MECHANICAL KEYLESS NARROW STILE KNOB LOCK WITH PASSAGE FUNCTION

- Mechanical, keyless narrow stile knob lock
- Auto-locking with passage function
- One User Code (changeable)
- 1 1/8" Backset Latch, replaces Adams-Rite style locks
- Ideal for gates



SHOWN IN
SATIN CHROME
MARINE GRADE



SINGLE COMBINATION

Part Number	Description
2930-(finish)	Mechanical Keyless Narrow Stile Knob Lock with Passage Function, single combination



DOUBLE COMBINATION

Part Number	Description
2930-(finish)-DC	Mechanical Keyless Narrow Stile Knob Lock with Passage Function, double combination

Available Finishes : Antique Brass (AB), Bright Brass (BB), Bright Chrome (BC), Jet Black Marine Grade (JBMG), Oil Rubbed Bronze (OIL), Satin Chrome Marine Grade (SCMG), Satin Nickel (SN), White (WH)

Dimensions & Specs : 5 5/8" L X 1 5/8" W X 2 1/4" D", TOTAL COVERAGE WITH TRIM PLATES: 6" L X 2" W, DOOR THICKNESS: 1 1/8" TO 2", FITS DOORS UP TO 5" WITH EXTENSION KIT (SOLD SEPARATELY), MATERIAL: ZINC-PLATED STEEL WITH TEFLON COATED STAINLESS STEEL INTERIOR COMPONENTS, FOR EXTERIOR & INTERIOR USE.

Compatible with : GB900+, GB2900LINX, SB2985, 2835 Lever

2950 MECHANICAL KEYLESS NARROW STILE HOOK BOLT LOCK

- Mechanical, keyless, narrow stile hook bolt lock
- Knob on exterior, thumb turn on interior
- One User Code (changeable)
- 1 1/8" Backset Latch, replaces Adams-Rite style locks
- Ideal for aluminum storefront doors and sliding gates



SHOWN IN SATIN CHROME MARINE GRADE



SINGLE COMBINATION

Part Number	Description
2950-(finish)	Mechanical Keyless Narrow Stile Hook Bolt Lock, single combination



DOUBLE COMBINATION

Part Number	Description
2950-(finish)-DC	Mechanical Keyless Narrow Stile Hook Bolt Lock, double combination

Available Finishes : Antique Brass (AB), Bright Brass (BB), Bright Chrome (BC), Jet Black Marine Grade (JBMG), Oil Rubbed Bronze (OIL), Satin Chrome Marine Grade (SCMG), Satin Nickel (SN), White (WH)

Dimensions & Specs : 5 5/8" L X 1 5/8" W X 1 5/8" D, TOTAL COVERAGE WITH TRIM PLATES: 6" L X 2" W, THROW: 1 1/2", DOOR THICKNESS: 1 1/8" TO 2", FITS DOORS UP TO 5" WITH EXTENSION KIT (SOLD SEPARATELY), MATERIAL: ZINC-PLATED STEEL WITH TEFLON COATED STAINLESS STEEL INTERIOR COMPONENTS, FOR EXTERIOR & INTERIOR USE.

Compatible with : GB900+, GB2900LINX, SB2900

2985 MECHANICAL KEYLESS NARROW STILE LEVER LOCK WITH PASSAGE FUNCTION

- Mechanical, keyless narrow stile lever lock
- Auto-locking with passage function
- One User Code (changeable)
- 1 1/8" Backset Latch, replaces Adams-Rite style locks
- Ideal for gates



SHOWN IN
SATIN CHROME
MARINE GRADE



SINGLE COMBINATION

Part Number	Description
2985-(finish)	Mechanical Keyless Narrow Stile Lever Lock with Passage Function, single combination



DOUBLE COMBINATION

Part Number	Description
2985-(finish)-DC	Mechanical Keyless Narrow Stile Lever Lock with Passage Function, double combination



Available Finishes : Antique Brass (AB), Bright Brass (BB), Bright Chrome (BC), Jet Black Marine Grade (JBMG), Oil Rubbed Bronze (OIL), Satin Chrome Marine Grade (SCMG), Satin Nickel (SN), White (WH)

Dimensions & Specs : 5 5/8" L X 1 5/8" W X 2 1/4" D", TOTAL COVERAGE WITH TRIM PLATES: 6" L X 2" W, DOOR THICKNESS: 1 1/8" TO 2", FITS DOORS UP TO 5" WITH EXTENSION KIT (SOLD SEPARATELY), MATERIAL: ZINC-PLATED STEEL WITH TEFLON COATED STAINLESS STEEL INTERIOR COMPONENTS, FOR EXTERIOR & INTERIOR USE.

Compatible with : GB900+, GB2900LINX, SB2985, 2830 Knob

KOS KEY OVERRIDE SYSTEM FOR 2000 AND 2900 SERIES

- Add-On Key Override System
- Schlage Keyway
- Available keyed alike or keyed different
- Three keys included
- KOS and lock sold separately



Part Number	Description
KOS	Key Override System

Available Finishes : Antique Brass (AB), Bright Brass (BB), Bright Chrome (BC), Jet Black Marine Grade (JBMG), Oil Rubbed Bronze (OB), Satin Chrome Marine Grade (SCMG), Satin Nickel (SN), White (WH)

Dimensions & Specs : 8 1/16" L X 2 9/16" W X 2" D, DOOR THICKNESS: 1 1/8" TO 2", UP TO 5" THICK DOOR WITH EXTENSION KIT, MATERIAL: ALUMINUM, REVERSIBLE HANDING, FOR EXTERIOR & INTERIOR USE.



3210 MECHANICAL KEYLESS DIGITAL DEADBOLT LOCK

- Mechanical, keyless deadbolt lock
- Oversized knob on exterior and interior
- One User Code (changeable)
- Reversible handing
- Adjustable backset deadbolt



SINGLE COMBINATION

Part Number	Description
3210MG	Mechanical Keyless Deadbolt Lock, Satin Chrome Marine Grade Finish, single combination



DOUBLE COMBINATION

Part Number	Description
3210MGDC	Mechanical Keyless Deadbolt Lock, Satin Chrome Marine Grade Finish, double combination

Available Finishes : Satin Chrome Marine Grade (SCMG)

Dimensions & Specs : 6 1/4" L X 1 3/4" W X 2" D, TOTAL COVERAGE WITH TRIM PLATES: 6 3/4" L X 2 1/4" W, DOOR THICKNESS: 1 1/8" TO 2", FITS DOORS UP TO 5" WITH EXTENSION KIT (SOLD SEPARATELY), MATERIAL: ZINC-PLATED STEEL WITH TEFLON COATED STAINLESS STEEL INTERIOR COMPONENTS, FOR EXTERIOR & INTERIOR USE.

Compatible with : GB2500

3830 MECHANICAL KEYLESS KNOB LOCK WITH PASSAGE FUNCTION

- Mechanical, keyless knob lock
- Auto-locking with passage function
- One User Code (changeable)
- Reversible handing
- Adjustable backset latch



SHOWN IN
SATIN CHROME
MARINE GRADE



SINGLE COMBINATION

Part Number	Description
3830-(finish)	Mechanical Keyless Knob Lock with Passage Function, single combination

DOUBLE COMBINATION

Part Number	Description
3830-(finish)-DC	Mechanical Keyless Knob Lock with Passage Function, double combination

Available Finishes : Jet Black Marine Grade (JBMG), Oil Rubbed Bronze (OIL), Satin Chrome Marine Grade (SCMG), Satin Nickel (SN)

Dimensions & Specs : 6 5/16" L X 1 3/4" W X 2 1/4" D, TOTAL COVERAGE WITH TRIM PLATES: 7" L X 2 1/4" W, DOOR THICKNESS: 1 1/8" TO 2", FITS DOORS UP TO 5" WITH EXTENSION KIT (SOLD SEPARATELY), MATERIAL: ZINC-PLATED STEEL WITH TEFLON COATED STAINLESS STEEL INTERIOR COMPONENTS, FOR EXTERIOR & INTERIOR USE.

Compatible with : GB2500, 2835 Lever

3835 MECHANICAL KEYLESS LEVER LOCK WITH PASSAGE FUNCTION

- Mechanical, keyless lever lock
- Auto-locking with passage function
- One User Code (changeable)
- Reversible handing
- Adjustable backset latch



SHOWN IN
SATIN CHROME
MARINE GRADE



SINGLE COMBINATION

Part Number	Description
3835-(finish)	Mechanical Keyless Lever Lock with Passage Function, single combination



DOUBLE COMBINATION

Part Number	Description
3835-(finish)-DC	Mechanical Keyless Lever Lock with Passage Function, double combination

Available Finishes : Jet Black Marine Grade (JBMG), Oil Rubbed Bronze (OIL), Satin Chrome Marine Grade (SCMG), Satin Nickel (SN)

Dimensions & Specs : 6 5/16" L X 1 3/4" W X 2 1/4" D, TOTAL COVERAGE WITH TRIM PLATES: 7" L X 2 1/4" W, DOOR THICKNESS: 1 1/8" TO 2", FITS DOORS UP TO 5" WITH EXTENSION KIT (SOLD SEPARATELY), MATERIAL: ZINC-PLATED STEEL WITH TEFLON COATED STAINLESS STEEL INTERIOR COMPONENTS, FOR EXTERIOR & INTERIOR USE.

Compatible with : GB2500, 2830 Knob



GL2 SURFACE MOUNT GATE LOCK

- Easy to install surface mount gate kit, lock included
- No welding needed
- Auto-locking with passage function
- Keyed cylinder lockout function prevents code use when locked
- Adjustable strike accommodates gate gaps up to 2"



WEATHER
RESISTANT

SHOWN IN
SATIN CHROME
MARINE GRADE



SINGLE COMBINATION

Part Number	Description
GL2-(finish)	Surface Mount Gate Lock with Passage and Key Lockout Function, single combination



DOUBLE COMBINATION

Part Number	Description
GL2-(finish)-DC	Surface Mount Gate Lock with Passage and Key Lockout Function, double combination

Available Finishes : Jet Black Marine Grade (JBMG), Satin Chrome Marine Grade (SCMG)

Dimensions & Specs : DIMENSIONS ON GATE: 9 5/16" L X 2 1/2" W X 4" D, DIMENSIONS ON FENCE POST: 8 5/8" L X 1 1/2" W X 2 1/4" D, GATE THICKNESS: 1 1/4" TO 3.5", UP TO 5" WITH EXTENSION KIT (SOLD SEPARATELY), MINIMUM GATE STILE WIDTH: 1 1/2", LOCK MATERIAL: ZINC-PLATED STEEL TEFLON COATED STAINLESS STEEL INTERIOR COMPONENTS, FOR EXTERIOR & INTERIOR USE. TO RETAIN PRODUCT WARRANTY, A SLAM PREVENTION DEVICE MUST BE INSTALLED.

Compatible with : GL2LINX158, GL2LINX178

MC728 MECHANICAL COMBINATION CAM LOCK

- Mechanical cam lock
- 4 Wheel Combination
- 10,000 unique combinations
- Lost code finder key
- Easy Installation

Part Number	Description
MC728-(finish)	Mechanical Combination Cam Lock

Available Finishes : Silver (S), Black (B)

Dimensions & Specs : DIAMETER: 56 X 28MM, NUT FIXING: 3/4" - 27 UN X 21MM LONG (16.5MM A/F), CAM FIXING: 8MM SQ. WITH M4 THREAD, MATERIAL: ZINC DIE - CAST CONSTRUCTION, FINISH: POWDER COATED, FOR EXTERIOR & INTERIOR USE, WEATHER RESISTANT, LIMITED LIFETIME MECHANICAL WARRANTY



GM270 GEMINI MECHANICAL COMBINATION CABINET LOCK

- Mechanical cam lock
- 4 Wheel Combination
- 10,000 unique combinations
- Lost code finder key
- Easy Installation

Part Number	Description
GM270-(finish)-V	GM270, vertical
GM270-(finish)-R	GM270, right handed
GM270-(finish)-L	GM270, left handed <i>(custom order only)</i>

Available Finishes : Silver (S), Black (B), White (W)

Dimensions & Specs : 3 3/4" L X 1 5/16" W X 1 3/8" D, LIMITED LIFETIME MECHANICAL WARRANTY



MS40 MECHANICAL COMBINATION SLIDE BOLT LOCK

- Mechanical keyless slide bolt
- Surface mounted
- 4 Wheel Combination
- Ideal for retrofitting
- Easy Installation

Part Number	Description
MS40	Mechanical Combination Slide Bolt Lock

Available Finishes : Black

Dimensions & Specs : 2" L X 3 1/2" W X 1 1/4" D, THROW: 7/8", MATERIAL: CORROSION RESISTANT ZINC DIECAST BODY, WEATHER RESISTANT, FOR EXTERIOR & INTERIOR USE



MECHANICAL LOCK ACCESSORIES

Product	Description
PINKIT	Extra Combination Tumblers
TPS- TAMPER PROOF	Tamper Proof Screws
EXT KIT 1150 ADJ	Extension Kit for use with 1150/1600 on doors/gates up to 5" thick
EXT KIT 2000/3000	Extension Kit for use with C/M/2000/3000 Series on doors/gates up to 5" thick
EXT KIT 2835 ADJUST	Extension Kit for use with 2830/2835/3830/3835 on doors/gates up to 5" thick
Extension Kit for Key Override	Extension Kit for use with Mechanical Locks with Key Override
Extension Kit- SUMO GL2	Extension Kit for use with SUMO™ GL2 Surface Mount Gate Lock
TDK	Thin Door Kit for use with surface mount keyless locks
ADJUSTABLE DEADBOLT	Adjustable Deadbolt for use with M210, 2210, 3210
SLADJUSTABLE LEVER	Adjustable Latch for use with 1150, 1600, 2830, 2835, 3830, 3835
SKADJKNOB LATCH	Adjustable Latch for use with M230
M Series Outside Body	M Series Outside Body, specify finish
M Series Inside Body	M Series Inside Body, specify finish
M Series DC Inside Body	M Series DC Inside Body, specify finish
1150/1600 Outside Body	1150/1600 Outside Body, specify finish
1150/1600 Inside Body	1150/1600 Inside Body, specify finish
16-KNOB	Knob for use on 1150/1600 Mechanical Keyless Lock, specify finish
Key Override Outside Body (built in)	Key Override Outside Body (built in), specify finish
2000 Series Outside Body	2000 Series Outside Body, specify finish
2000 Series Inside Body	2000 Series Inside Body, specify finish
2000 Series DC Inside Body	2000 Series DC Inside Body, specify finish
2835 Outside Body	2835 Outside Body, specify finish
2835 Inside Body	2835 Inside Body, specify finish
2835DC Inside Body	2835DC Inside Body, specify finish
2835 LEVER ONLY	Lever for use on 2830, 2835, 3830, 3835, specify finish
28-KNOB	Lever for use on 2830, 2835, 3830, 3835, specify finish
900-BOLT	Narrow Stile Deadbolt for use with 2900
930LATCH	Narrow Stile Latch for use with 2930, 2985
950-HOOK	Narrow Stile Hook Bolt for use with 2950
T 1150	T Cover 1150 (3" x 8 1/2" Cover Plate) for use with 1150, 1600
T-COVER 2500	T Cover 2500 (3 1/4" x 9" Cover Plate) for use with 2000 and 3000 Series
T-METAL	T-Metal Metal Trim Plate for use with 2000 Series Locks
PPG Push/Pull Guard	Push/Pull Guard for use with 2000 Series, 3000 Series, 310P
AR2991 Adams Rite Mounting Tabs	Mounting Tabs for use with 2900 Series Narrow Stile Locks

For a list of all available accessories, please contact your LockeyUSA sales representative.

2835-ADAPTER

- Easily install the 2835 or 2830 Mechanical Keyless Lock (sold separately) on a gate
- No need for a gate box or welding
- Ideal for vinyl and ornamental gates
- Installs on gates 1.75" to 5" thick without the need for an extension kit
- Works with gate gaps ranging from .4" to 1.5"
- Weather Resistant
- Reversible Handing



Part Number	Description
2835-Adapter	Adapter for installing the 2835/2830 on Vinyl and Ornamental Gates, black

GL2LINX ADAPTER

- Chain Link Gate Adapter – Lock sold separately
- For mounting a LockeyUSA SUMO™ GL2 keyless gate lock on a chain link gate
- Bolts on, no welding needed



Part Number	Description
GL2LINX158	1 5/8" Adapter for installing the SUMO™ GL2 on Chain Link Gates
GL2LINX178	1 7/8" Adapter for installing the SUMO™ GL2 on Chain Link Gates

GATE BOXES



Part Number	Description
GB200-M	Steel Gate Box for use with M210, M230
GB200-MAL	Aluminum Gate Box for use with M210, M230



Part Number	Description
GB210	Steel Gate Box for use with M210 + knob/lever
GB210-AL	Aluminum Gate Box for use with M210 + knob/lever



Part Number	Description
GB210PLUSDC	Kit includes GB210 Steel Gate Box, M210DC, knob
GB210PLUSDCAL	Kit includes GB210 Aluminum Gate Box, M210DC, knob



Part Number	Description
GB210PLUSDCLEVER	Kit includes GB210 Steel Gate Box, M210DC, lever
GB210PLUSDCLEVERAL	Kit includes GB210 Aluminum Gate Box, M210DC, lever



Part Number	Description
GB900+	Steel Gate Box for use with 2900, 2930, 2950, 2985 (replaces GB900 and GB950)
GB900AL+	Aluminum Gate Box for use with 2900, 2930, 2950, 2985 (replaces GB900AL and GB950AL)



Part Number	Description
GB1150	Steel Gate Box for use with 1150, 1600
GB1150-AL	Aluminum Gate Box for use with 1150, 1600



Part Number	Description
GB2500	Steel Gate Box for use with 2210, 2830, 2835, 3210, 3830, 3835
GB2500ALUMINUM	Aluminum Gate Box for use with 2210, 2830, 2835, 3210, 3830, 3835



Part Number	Description
GBADDABOLT	Narrow Stile Gate Box for use with M210DC and Drive-In-Deadbolt



Part Number	Description
GBADDABOLT DC KIT	Kit includes GBADDABOLT Narrow Stile Gate Box, M210DC and Drive-In-Deadbolt



Part Number	Description
GB2900LINX	Stainless Steel Chain Link Gate Box for use with 2900, 2930, 2950, 2985

TB100 TURTLEBACK GATE CLOSER

- Gently closes gates up to 125 lbs. and 54" wide
- Pushes gate closed with adjustable closing speed
- Can be used on lightweight, non-fire rated doors
- Hinge Arrangements: In-Line/Flush Hinges
- Gap between hinges and gate post should be 1" or less



Part Number	Description
TB100	Turtleback Gate Closer

Dimensions & Specs : 7 1/2" L X 13" W X 2 1/2" D, MOUNTING BRACKET DIMENSIONS: 3 1/4" X 1 3/4", MAX. GATE WEIGHT: 125 LBS., MAX. GATE WIDTH: 54", MAX. OPENING ANGLE: 90 DEGREES, MIN. OPERATING TEMPERATURE: 10 DEGREES, MAX. OPERATING TEMPERATURE: 110 DEGREES, GATE MATERIAL TYPE: VINYL, WOOD, METAL, CHAIN LINK, CLOSING/LATCHING METHOD: HYDRAULIC, MATERIAL: STEEL, FINISH: POWDER COATED, FINISH COLOR: BLACK, HINGE ARRANGEMENTS: IN-LINE/FLUSH, OPENING PRESSURE: VARIABLE DEPENDING ON GATE SIZE

TB175 GARDEN GATE CLOSER

- Gently closes gates up to 110 lbs. and 54" wide
- Pushes gate closed with adjustable closing and latching speed
- Hold-open feature allows gate to be temporarily held open
- Flush mount closer
- Hinge Arrangements: In-Line/Flush Hinges



Part Number	Description
TB175B	Garden Gate Closer, Black
TB175W	Garden Gate Closer, White



Available Finishes : Black (B), White (W)

Dimensions & Specs : 12 1/2" L X 2 1/2" W X 2 3/8" D, MAX. GATE WEIGHT: 110 LBS., MAX. GATE WIDTH: 54", MAX. OPENING ANGLE: 90 DEGREES, GATE MATERIAL TYPE: METAL, VINYL, WOOD, CLOSING/LATCHING: ADJUSTABLE, MATERIAL: STEEL, FINISH: POWDER COATED, FINISH COLOR: BLACK OR WHITE, HINGE ARRANGEMENTS: IN-LINE, OPENING PRESSURE: VARIABLE DEPENDING ON GATE SIZE

HYDRAULIC GATE CLOSERS

- Hydraulic controlled closing speed
- Installs on top/middle/bottom of left and right hand gates
- Mounts on opening side of gate, pushes the gate closed
- Mounting brackets and fitting bar included
- Hinge Arrangements: In-line or Offset



WEATHER
RESISTANT



TB200 / TB400 / TB600



Part Number	Description	Opening Pressure
TB200	Hydraulic Gate Closer for gates 50 to 125 lbs., 30-52" wide	3-7 lbs.
TB400	Hydraulic Gate Closer for gates 75 to 175 lbs., 40-64" wide	6-12 lbs.
TB600	Hydraulic Gate Closer for gates 150 to 250 lbs., 44-72" wide	8-18 lbs.

Available Finishes : Black

Dimensions & Specs : MAX. OPENING ANGLE: 100 DEGREES, MIN. OPERATING TEMPERATURE: 15 DEGREES FAHRENHEIT*, MAX. OPERATING TEMPERATURE: 122 DEGREES FAHRENHEIT*, TYPE OF GATE MATERIAL: VINYL, STEEL, WOOD, CHAIN LINK**, CLOSING/LATCH METHOD: HYDRAULIC/NITROGEN GAS, MATERIAL: STEEL. *OPERATION OF THE CLOSER IN TEMPERATURES BELOW OR ABOVE THE MINIMUM AND MAXIMUM OPERATING TEMPERATURES MAY RESULT IN IMPROPER OPERATION OR COMPLETE FAILURE OF THE CLOSER. **CAN BE MOUNTED ON CHAIN LINK GATES WITH THE TBLINX, SOLD SEPARATELY.

Compatible with : TBLINX, TBLINX 4



TB200SS / TB400SS / TB600SS



Part Number	Description	Opening Pressure
TB200SS	Hydraulic Gate Closer for gates 50 to 125 lbs., 30-52" wide, Stainless Steel	3-7 lbs.
TB400SS	Hydraulic Gate Closer for gates 75 to 175 lbs., 40-64" wide, Stainless Steel	6-12 lbs.
TB600SS	Hydraulic Gate Closer for gates 150 to 250 lbs., 44-72" wide, Stainless Steel	8-18 lbs.

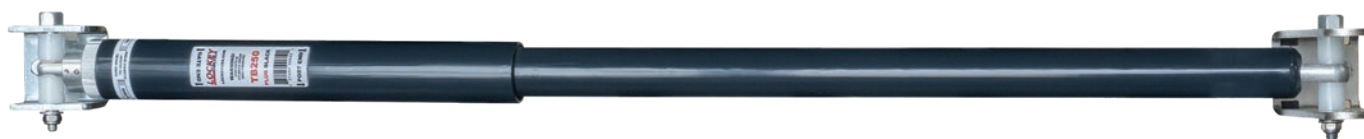
Available Finishes : Stainless Steel

Dimensions & Specs : MAX. OPENING ANGLE: 100 DEGREES, MIN. OPERATING TEMPERATURE: 15 DEGREES FAHRENHEIT*, MAX. OPERATING TEMPERATURE: 122 DEGREES FAHRENHEIT*, TYPE OF GATE MATERIAL: VINYL, STEEL, WOOD, CHAIN LINK**, CLOSING/LATCH METHOD: HYDRAULIC/NITROGEN GAS, MATERIAL: STAINLESS STEEL. *OPERATION OF THE CLOSER IN TEMPERATURES BELOW OR ABOVE THE MINIMUM AND MAXIMUM OPERATING TEMPERATURES MAY RESULT IN IMPROPER OPERATION OR COMPLETE FAILURE OF THE CLOSER. **CAN BE MOUNTED ON CHAIN LINK GATES WITH THE TBLINX, SOLD SEPARATELY.

Compatible with : TBLINX, TBLINX 4

ADJUSTABLE HYDRAULIC GATE CLOSERS

- Adjustable Hydraulic controlled closing speed
- Installs on top/middle/bottom of left and right hand gates
- Mounts on opening side of gate, pushes the gate closed
- Mounting brackets and fitting bar included
- Hinge Arrangements: In-line or Offset



TB250 / TB450 / TB650

Part Number	Description	Opening Pressure
TB250-(finish)	Adjustable Hydraulic Gate Closer for gates 50 to 125 lbs., 30-52" wide	3-7 lbs.
TB450-(finish)	Adjustable Hydraulic Gate Closer for gates 75 to 175 lbs., 40-64" wide	6-12 lbs.
TB650-(finish)	Adjustable Hydraulic Gate Closer for gates 150 to 250 lbs., 44-72" wide	8-18 lbs.

Available Finishes : Black (B), White (W), Grey (G)

Dimensions & Specs : MAX. OPENING ANGLE: 100 DEGREES, MIN. OPERATING TEMPERATURE: 15 DEGREES FAHRENHEIT*, MAX. OPERATING TEMPERATURE: 122 DEGREES FAHRENHEIT*, TYPE OF GATE MATERIAL: VINYL, STEEL, WOOD, CHAIN LINK**, CLOSING/LATCH METHOD: HYDRAULIC/NITROGEN GAS, MATERIAL: STEEL, FINISH: PVC WRAPPED. *OPERATION OF THE CLOSER IN TEMPERATURES BELOW OR ABOVE THE MINIMUM AND MAXIMUM OPERATING TEMPERATURES MAY RESULT IN IMPROPER OPERATION OR COMPLETE FAILURE OF THE CLOSER. **CAN BE MOUNTED ON CHAIN LINK GATES WITH THE TBLINX, SOLD SEPARATELY.

Compatible with : TBLINX, TBLINX 4

TB950 MAGNUM GATE CLOSER

- All-in-one closer and hinge system
- Concealed, high use, pedestrian gate closer
- Tamper and vandal resistant
- Million cycle tested
- Two speed adjustments: closing & latching



Part Number	Description
TB950	All-in-One Gate Closer and Hinge System for high-use gates 50-250 lbs.



Compatible with : TB950 LINX, TB950PLATE 180 DRIVE



TB600
HYDRAULIC
GATE CLOSER

GATE CLOSER ACCESSORIES

Product	Description
TBLINX	For mounting TB200, TB400, TB600, TB250, TB450, TB650 on chain link gates
TBLINX 4"	For mounting TB200, TB400, TB600, TB250, TB450, TB650 on chain link gates, 4"
TB950 LINX	For mounting TB950 Magnum on chain link gates
TB950PLATE 180 DRIVE	180 Drive Plate for TB950, increases max. opening angle to 180 degrees, saloon style
TBMOUNTING KIT	Mounting Kit for TB200, TB400, TB600, TB250, TB450, TB650
TB950R	TB950 Replacement Chuck/Cylinder
TB200-R	TB200 Replacement Cylinder
TB200SS-R	TB200SS Replacement Cylinder, Stainless Steel
TB400-R	TB400 Replacement Cylinder
TB400SS-R	TB400SS Replacement Cylinder, Stainless Steel
TB600-R	TB600 Replacement Cylinder
TB600SS-R	TB600SS Replacement Cylinder, Stainless Steel
TB250-R	TB250 Replacement Cylinder
TB450-R	TB450 Replacement Cylinder
TB650-R	TB650 Replacement Cylinder

For a list of all available accessories, please contact your LockeyUSA sales representative.

GATE & PANIC HARDWARE

2900 STRIKE BRACKET

- Strike Bracket for 2900/2950 locks, includes necessary mounting hardware



Part Number	Description
SB2900-KIT	Strike Bracket for use with 2900, 2950

2985 STRIKE BRACKET

- Strike Bracket for 2930/2985 locks, includes necessary mounting hardware



Part Number	Description
SB2985-KIT	Strike Bracket for 2930, 2985

PS STRIKE BRACKET

- For standard style shield setups, includes mounting hardware



Part Number	Description
PSSBB-KIT	Strike Bracket, black
PSSBS-KIT	Strike Bracket, silver

ED STRIKE BRACKET

- For EDGE style shield setups, includes mounting hardware



Part Number	Description
ED-SB-BLACK	EDGE Strike Bracket, black
ED-SB-SILVER	EDGE Strike Bracket, silver

MAX GUARD

- Mounts above panic bar to prevent tampering 4" Protrusion, 24" wide



Part Number	Description
PSMAXBLACK	Max Guard, black
PSMAXSILVER	Max Guard, silver

LATCH PROTECTOR

- Provides extra security to gate latches, for gates with over 1" gap



Part Number	Description
LPB	Latch Protector, black
LPS	Latch Protector, silver

GATE STOP

- Prevents gate from opening past 90°



Part Number	Description
GSHD-90 KIT	Gate Stop, Heavy Duty

EDGE JAMB STOP

- Prevents chain link gate from opening past 90°



Part Number	Description
ED-LINX	EDGE LINX Gate Jamb Stop

GATE STOP FOR CHAIN LINK GATES

- Prevents chain link gate from opening past 90°



Part Number	Description
GS-LINX	Gate Stop for Chain Link Gates
GS-LINX4"	Gate Stop for Chain Link Gates, 4"

PRE-DRILLED PANIC SHIELDS

- Mounting plate for a panic bar
- Pre-drilled for PB1100, PB2500 and V40 Series
- Turns gates into emergency exits
- 16ga Electro-galvanized Steel
- Adjustable width from 28" to 54"
- Available in 24" and 12" shield heights
- Powder coated finish



Part Number	Description
ED3X1BLACK12"	12" EDGE Style Panic Shield 3x1, predrilled for PB1100, PB2500 & V40 Series Panic Bars, black
ED3X1SILVER12"	12" EDGE Style Panic Shield 3x1, predrilled for PB1100, PB2500 & V40 Series Panic Bars, silver
ED3X1BLACK24"	24" EDGE Style Panic Shield 3x1, predrilled for PB1100, PB2500 & V40 Series Panic Bars, black
ED3X1SILVER24"	24" EDGE Style Panic Shield 3x1, predrilled for PB1100, PB2500 & V40 Series Panic Bars, silver
PS3X1BLACK12"	12" PS Panic Shield 3x1, predrilled for PB1100, PB2500 & V40 Series Panic Bars, black
PS3X1SILVER12"	12" PS Panic Shield 3x1, predrilled for PB1100, PB2500 & V40 Series Panic Bars, silver
PS3X1BLACK24"	24" PS Panic Shield 3x1, predrilled for PB1100, PB2500 & V40 Series Panic Bars, black
PS3X1SILVER24"	24" PS Panic Shield 3x1, predrilled for PB1100, PB2500 & V40 Series Panic Bars, silver

PANIC SHIELDS

- Mounting plate for a panic bar
- Turns gates into emergency exits
- 16ga Electro-galvanized Steel
- Adjustable width from 28" to 54"
- Available in 24" and 12" shield heights
- Powder coated finish



PS12

PS24

Part Number	Description
PS12-B	12" PS Panic Shield, black
PS12-S	12" PS Panic Shield, silver
PS24-B	24" PS Panic Shield, black
PS24-S	24" PS Panic Shield, silver

PANIC SHIELD EXTENSION PANELS

- Extension shields
- Extends panic shield to 74"
- 16ga Electro-galvanized Steel
- Available in 24" and 12" shield heights
- Powder coated finish



PSEXT12

PSEXT24

Part Number	Description
PSEXT12BLACK	12" PS Extension Panel, black
PSEXT12SILVER	12" PS Extension Panel, silver
PSEXT24BLACK	24" PS Extension Panel, black
PSEXT24SILVER	24" PS Extension Panel, silver

PB1100 PANIC BARS

- Grade 1 Certified ANSI/BHMA A156.3 Series
- Complies with ANSI A117.a ADA requirements
- UL/cUL Listed
- Weather Resistant
- Latch Bolt: Stainless Steel Powder Metallurgy, 11/16" throw
- Deadlocking Latch: Stainless Steel Powder Metallurgy, 9/16" throw
- Narrow Stile: 2 1/2"
- Door Thickness: 1 3/4" (standard)
- Field-sizable: Can be cut down to 27"
- Compatible with all LockeyUSA Panic Trims & Keyless Panic Trims
- PB1100 Device Length: 33" for 36" doors
- PB1142 Device Length: 42" for 48" doors
- PB1100FR only: UL/cUL Listed 3 hour fire-rated 10C, UBC 7-2 (1997)



Part Number	Description
PB1100-AL	PB1100 Panic Bar
PB1100-SS	PB1100 Panic Bar, Stainless Steel
PB1100FRFIRE	PB1100 Panic Bar, Fire Rated
PB1142-42	PB1142 Panic Bar for 48" Doors
PB1142-SS	PB1142 Panic Bar for 48" Doors, Stainless Steel

PB2500 PANIC BARS

- Patented double-interlocking system makes the PB2500 virtually impossible to tamper with, pry, or force open
- UL Certified ANSI/BHMA 156.3 2008, Grade 1
- Listed by CA State Fire Marshall
- ADA Compliant
- Conforms to Positive Pressure Standards, UL 10C UBC 7-2
- Accepted by NYC, Department of Buildings, MEA 337-92M
- Standard lengths for 36" or 48" doors/gates
- Can be field cut for undersized doors/gates
- Designed for narrow stile aluminum doors
- Made in the USA
- Weather Resistant
- Non-handed



Part Number	Description
PB2500	PB2500 Panic Bar
PB2500-ALARM	PB2500 Alarm Bar
PB2542-42	PB2542 Panic Bar for 48" Doors
PB2542-ALARM	PB2542 Alarm Bar for 48" Doors

V40 SERIES

- ANSI and BHMA Grade 1 Certified
- UL/cUL Listed
- ADA Compliant
- Narrow Stile: 2 1/2"
- Door Thickness: 1 3/4" (standard)
- Field-sizable
- Weatherproof



Part Number	Description
V40	Detex 33" Panic Bar
V40x48	Detex 42" Panic Bar
V40x711	Detex 33" Panic Bar, black
V40x711x48	Detex 42" Panic Bar, black
V40xW	Detex 33" Panic Bar, weatherized
V40xEB	Detex 33" Alarm Bar
V40xEBx48	Detex 42" Alarm Bar
V40xEBx711	Detex 33" Alarm Bar, black
V40xEBx711x48	Detex 42" Alarm Bar, black
V40xEBxW	Detex 33" Alarm Bar, weatherized
V40xEBxWx48	Detex 42" Alarm Bar, weatherized
V40xEBxWx711	Detex 33" Alarm Bar, weatherized, black
V40xEBxWx711x48	Detex 42" Alarm Bar, weatherized, black

KEYLESS PANIC TRIMS

- Compatible with panic bars that accept a flat tail piece and have a turn radius of 74° or less.
- Passage Function



115P

- Available Finishes : Jet Black Marine Grade (JBMG), Oil Rubbed Bronze (OIL)

Part Number	Description
115P-(finish)	115P Keyless Panic Trim



160P

- Available Finishes : Jet Black Marine Grade (JBMG), Oil Rubbed Bronze (OIL)

Part Number	Description
160P-(finish)	160P Keyless Panic Trim



310P

Part Number	Description
310PMG	310P Keyless Panic Trim



285P

- Available Finishes: Antique Brass (AB), Bright Brass (BB), Bright Chrome (BC), Jet Black Marine Grade (JBMG), Oil Rubbed Bronze (OIL), Satin Chrome Marine Grade (SCMG), Satin Nickel (SN), White (WH)

Part Number	Description
285P-(finish)	285P Keyless Panic Trim

PANIC TRIMS



PBDUMED

Pull Handle Entry Trim - Compatible with PB1100, PB2500, V40 Series Panic Bars



PBLHCL

Lever Handle Clutch Trim - Compatible with PB1100, PB2500, V40 Series Panic Bars



PBLHED

Lever Handle Keyed Entry - Compatible with PB1100, V40 Series Panic Bars



PBLHSR

Lever Handle Storeroom - Compatible with PB1100, V40 Series Panic Bars



PBLHPS

Lever Handle Passage Trim - Compatible with PB1100, V40 Series Panic Bars



PBNLED

Night Latch Handleset Trim - Compatible with PB1100, PB2500, V40 Series Panic Bars



PBTPED

Thumbpiece Keyed Entry Trim - Compatible with PB1100, PB2500, V40 Series Panic Bars



V08BN689 PASSAGE

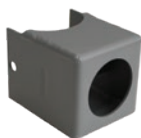
Detex Panic Trim Passage Lever - Compatible with Detex V40 Panic Bars



V09BN689 JANITOR

Detex Panic Trim Janitor Lever - Compatible with Detex V40 Panic Bars

TRIM BOXES



Part Number	Description
ED-GB-5B	EDGE Key Box for use with keyed cylinder on EDGE panic shield setups, black
ED-GB-5S	EDGE Key Box for use with keyed cylinder on EDGE panic shield setups, silver



Part Number	Description
ED-GB200-B	EDGE Keyless Trim Gate Box for use with 285P, black
ED-GB200-S	EDGE Keyless Trim Gate Box for use with 285P, silver



Part Number	Description
PSGB5BLACK	Key Box for use with keyed cylinder on standard panic shield setups, black
PSGB5SILVER	Key Box for use with keyed cylinder on standard panic shield setups, silver



Part Number	Description
PSGB100BLACK	Keyless Trim Box for use with 115P/160P, black
PSGB100SILVER	Keyless Trim Box for use with 115P/160P, silver



Part Number	Description
PSGB200BLACK	Keyless Trim Box for use with 285P, black
PSGB200SILVER	Keyless Trim Box for use with 285P, silver



Part Number	Description
PSGBLH BLACK LEVER	Trim Box for use with PBLHPS/PBLHED/PBLHSR, black
PSGBLH LEVER S	Trim Box for use PBLHPS/PBLHED/PBLHSR, silver



Part Number	Description
GB08GS	Trim Box for use with DETEX V08BN689/V09BN689 Panic Trims

PANIC HARDWARE ACCESSORIES

Product	Description
V-P-TAIL LOCKEY	Tailpiece/Spindle for use with P-Series Lever Locks and Detex V40 Series Panic Bars
V-TAIL - KNOB	Tailpiece/Spindle for use with P-Series Knob Locks and Detex V40 Series Panic Bars
PBSTRIKE KIT	PB1100 Strike Kit
PSCYL	Keyed Rim Cylinder for use with PSGB5 Key Box (1 1/8" Schlage 5 pin)
PSCYLIC	IC Core Cylinder for use with panic bars (1 1/8" Rim Cylinder IC Core)
VCYL	Mortised Cylinder for use with PB2500, PB Keyed Trims & V40 Alarm (1 1/8" Schlage C 5 pin)



EDGE PANIC SHIELD KITS

- Panic Bar is closer to the strike
- Reduced strike bracket size and protrusion
- Latch protector + jamb stop included

STANDARD PANIC SHIELD KITS

NO PANIC BAR INCLUDED



Part Number	Description
PS40B	Black - Panic Shield, PSSB Strike Bracket
PS40S	Silver - Panic Shield, PSSB Strike Bracket
PS50B	Black - Panic Shield, PSSB Strike Bracket, PSGB5 Key Box, Key Cylinder
PS50S	Silver - Panic Shield, PSSB Strike Bracket, PSGB5 Key Box, Key Cylinder
PS60B	Black - Panic Shield, PSSB Strike Bracket, PSGB200 Gate Box, 285-P Keyless Panic Trim, Max Guard
PS60S	Silver - Panic Shield, PSSB Strike Bracket, PSGB200 Gate Box, 285-P Keyless Panic Trim, Max Guard

EDGE PANIC SHIELD KITS

NO PANIC BAR INCLUDED



Part Number	Description
ED40B	Black - Panic Shield, ED-SB Strike Bracket, Latch Protector, Jamb Stop
ED40S	Silver - Panic Shield, ED-SB Strike Bracket, Latch Protector, Jamb Stop
ED50B	Black - Panic Shield, ED-SB Strike Bracket, ED-GB5 Key Box, Key Cylinder, Latch Protector, Jamb Stop
ED50S	Silver - Panic Shield, ED-SB Strike Bracket, ED-GB5 Key Box, Key Cylinder, Latch Protector, Jamb Stop
ED60B	Black - Panic Shield, ED-SB Strike Bracket, ED-GB200 Gate Box, 285-P Keyless Panic Trim, Latch Protector, Jamb Stop, Max Guard
ED60S	Silver - Panic Shield, ED-SB Strike Bracket, ED-GB200 Gate Box, 285-P Keyless Panic Trim, Latch Protector, Jamb Stop, Max Guard



PS41 Standard Panic Shield Value Kits, PB1100 Panic Bar included

Part Number	Description
PS41B	Black - Panic Shield, PB1100 Panic Bar, PSSB Strike Bracket
PS41S	Silver - Panic Shield, PB1100 Panic Bar, PSSB Strike Bracket

AVAILABLE UPGRADES

PS41BF	Black - Panic Shield, PB1100FR Fire Rated Panic Bar, PSSB Strike Bracket
PS41BL	Black - Panic Shield, PB1142 42" Panic Bar, PSSB Strike Bracket
PS41BLM	Black - Panic Shield, PB1142SS 42" Stainless Steel Panic Bar, PSSB Strike Bracket
PS41BM	Black - Panic Shield, PB1100SS Stainless Steel Panic Bar, PSSB Strike Bracket
PS41SF	Silver - Panic Shield, PB1100FR Fire Rated Panic Bar, PSSB Strike Bracket
PS41SL	Silver - Panic Shield, PB1142 42" Panic Bar, PSSB Strike Bracket
PS41SLM	Silver - Panic Shield, PB1142SS 42" Stainless Steel Panic Bar, PSSB Strike Bracket
PS41SM	Silver - Panic Shield, PB1100SS Stainless Steel Panic Bar, PSSB Strike Bracket



PS51 Standard Panic Shield Safety Kits, PB1100 Panic Bar included

Part Number	Description
PS51B	Black - Panic Shield, PB1100 Panic Bar, PSSB Strike Bracket, PSGB5 Key Box, Key Cylinder
PS51S	Silver - Panic Shield, PB1100 Panic Bar, PSSB Strike Bracket, PSGB5 Key Box, Key Cylinder

AVAILABLE UPGRADES

PS51BL	Black - Panic Shield, PB1142 42" Panic Bar, PSSB Strike Bracket, PSGB5 Key Box, Key Cylinder
PS51BM	Black - Panic Shield, PB1100SS Stainless Steel Panic Bar, PSSB Strike Bracket, PSGB5 Key Box, Key Cylinder
PS51BF	Black - Panic Shield, PB1100FR Fire Rated Panic Bar, PSSB Strike Bracket, PSGB5 Key Box, Key Cylinder
PS51BLM	Black - Panic Shield, PB1142SS 42" Stainless Steel Panic Bar, PSSB Strike Bracket, PSGB5 Key Box, Key Cylinder
PS51SL	Silver - Panic Shield, PB1142 42" Panic Bar, PSSB Strike Bracket, PSGB5 Key Box, Key Cylinder
PS51SM	Silver - Panic Shield, PB1100SS Stainless Steel Panic Bar, PSSB Strike Bracket, PSGB5 Key Box, Key Cylinder
PS51SF	Silver - Panic Shield, PB1100FR Fire Rated Panic Bar, PSSB Strike Bracket, PSGB5 Key Box, Key Cylinder
PS51SLM	Silver - Panic Shield, PB1142 42" Stainless Steel Panic Bar, PSSB Strike Bracket, PSGB5 Key Box, Key Cylinder

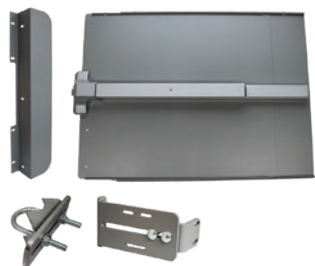


PS61 Standard Panic Shield Security Kits, PB1100 Panic Bar included

Part Number	Description
PS61B	Black - Panic Shield, PB1100 Panic Bar, PSSB Strike Bracket, PSGB5 Key Box, Key Cylinder
PS61S	Silver - Panic Shield, PB1100 Panic Bar, PSSB Strike Bracket, PSGB5 Key Box, Key Cylinder

AVAILABLE UPGRADES

PS61BL	Black - Panic Shield, PB1142 42" Panic Bar, PSSB Strike Bracket, PSGB200 Gate Box, 285-P Keyless Panic Trim, Max Guard
PS61BM	Black - Panic Shield, PB1100SS Stainless Steel Panic Bar, PSSB Strike Bracket, PSGB200 Gate Box, 285-P Keyless Panic Trim, Max Guard
PS61BF	Black - Panic Shield, PB1100FR Fire Rated Panic Bar, PSSB Strike Bracket, PSGB200 Gate Box, 285-P Keyless Panic Trim, Max Guard
PS61BLM	Black - Panic Shield, PB1142SS 42" Stainless Steel Panic Bar, PSSB Strike Bracket, PSGB200 Gate Box, 285-P Keyless Panic Trim, Max Guard
PS61SL	Silver - Panic Shield, PB1142 42" Panic Bar, PSSB Strike Bracket, PSGB200 Gate Box, 285-P Keyless Panic Trim, Max Guard
PS61SM	Silver - Panic Shield, PB1100SS Stainless Steel Panic Bar, PSSB Strike Bracket, PSGB200 Gate Box, 285-P Keyless Panic Trim, Max Guard
PS61SF	Silver - Panic Shield, PB1100FR Fire Rated Panic Bar, PSSB Strike Bracket, PSGB200 Gate Box, 285-P Keyless Panic Trim, Max Guard
PS61SLM	Silver - Panic Shield, PB1142SS 42" Stainless Steel Panic Bar, PSSB Strike Bracket, PSGB200 Gate Box, 285-P Keyless Panic Trim, Max Guard



ED41 EDGE Panic Shield Value Kits, PB1100 Panic Bar included

Part Number	Description
ED41B	Black - Panic Shield, PB1100 Panic Bar, ED-SB Strike Bracket, Latch Protector, Jamb Stop
ED41S	Silver - Panic Shield, PB1100 Panic Bar, ED-SB Strike Bracket, Latch Protector, Jamb Stop

AVAILABLE UPGRADES

ED41BF	Black - Panic Shield, PB1100FR Fire Rated Panic Bar, ED-SB Strike Bracket, Latch Protector, Jamb Stop
ED41BL	Black - Panic Shield, PB1142 42" Panic Bar, ED-SB Strike Bracket, Latch Protector, Jamb Stop
ED41BLM	Black - Panic Shield, PB1142SS 42" Stainless Steel Panic Bar, ED-SB Strike Bracket, Latch Protector, Jamb Stop
ED41BM	Black - Panic Shield, PB1100SS Stainless Steel Panic Bar, ED-SB Strike Bracket, Latch Protector, Jamb Stop
ED41SF	Silver - Panic Shield, PB1100FR Fire Rated Panic Bar, ED-SB Strike Bracket, Latch Protector, Jamb Stop
ED41SL	Silver - Panic Shield, PB1142 42" Panic Bar, ED-SB Strike Bracket, Latch Protector, Jamb Stop
ED41SLM	Silver - Panic Shield, PB1142SS 42" Stainless Steel Panic Bar, ED-SB Strike Bracket, Latch Protector, Jamb Stop
ED41SM	Silver - Panic Shield, PB1100SS Stainless Steel Panic Bar, ED-SB Strike Bracket, Latch Protector, Jamb Stop



ED51 EDGE Panic Shield Safety Kits, PB1100 Panic Bar included

Part Number	Description
ED51B	Black - Panic Shield, PB1100 Panic Bar, ED-SB Strike Bracket, ED-GB5 Key Box, Key Cylinder, Latch Protector, Jamb Stop
ED51S	Silver - Panic Shield, PB1100 Panic Bar, ED-SB Strike Bracket, ED-GB5 Key Box, Key Cylinder, Latch Protector, Jamb Stop

AVAILABLE UPGRADES

ED51BL	Black - Panic Shield, PB1142 42" Panic Bar, ED-SB Strike Bracket, ED-GB5 Key Box, Key Cylinder, Latch Protector, Jamb Stop
ED51BM	Black - Panic Shield, PB1100SS Stainless Steel Panic Bar, ED-SB Strike Bracket, ED-GB5 Key Box, Key Cylinder, Latch Protector, Jamb Stop
ED51BF	Black - Panic Shield, PB1100FR Fire Rated Panic Bar, ED-SB Strike Bracket, ED-GB5 Key Box, Key Cylinder, Latch Protector, Jamb Stop
ED51BLM	Black - Panic Shield, PB1142SS 42" Stainless Steel Panic Bar, ED-SB Strike Bracket, ED-GB5 Key Box, Key Cylinder, Latch Protector, Jamb Stop
ED51SL	Silver - Panic Shield, PB1142 42" Panic Bar, ED-SB Strike Bracket, ED-GB5 Key Box, Key Cylinder, Latch Protector, Jamb Stop
ED51SM	Silver - Panic Shield, PB1100SS Stainless Steel Panic Bar, ED-SB Strike Bracket, ED-GB5 Key Box, Key Cylinder, Latch Protector, Jamb Stop
ED51SF	Silver - Panic Shield, PB1100FR Fire Rated Panic Bar, ED-SB Strike Bracket, ED-GB5 Key Box, Key Cylinder, Latch Protector, Jamb Stop
ED51SLM	Silver - Panic Shield, PB1142SS 42" Stainless Steel Panic Bar, ED-SB Strike Bracket, ED-GB5 Key Box, Key Cylinder, Latch Protector, Jamb Stop



ED61 EDGE Panic Shield Security Kits, PB1100 Panic Bar included

Part Number	Description
ED61B	Black - Panic Shield, PB1100 Panic Bar, ED-SB Strike Bracket, ED-GB200 Gate Box, 285-P Keyless Panic Trim, Latch Protector, Jamb Stop, Max Guard
ED61S	Silver - Panic Shield, PB1100 Panic Bar, ED-SB Strike Bracket, ED-GB200 Gate Box, 285-P Keyless Panic Trim, Latch Protector, Jamb Stop, Max Guard

AVAILABLE UPGRADES

ED61BL	Black - Panic Shield, PB1142 42" Panic Bar, ED-SB Strike Bracket, ED-GB200 Gate Box, 285-P Keyless Panic Trim, Latch Protector, Jamb Stop, Max Guard
ED61BM	Black - Panic Shield, PB1100SS Stainless Steel Panic Bar, ED-SB Strike Bracket, ED-GB200 Gate Box, 285-P Keyless Panic Trim, Latch Protector, Jamb Stop, Max Guard
ED61BF	Black - Panic Shield, PB1100FR Fire Rated Panic Bar, ED-SB Strike Bracket, ED-GB200 Gate Box, 285-P Keyless Panic Trim, Latch Protector, Jamb Stop, Max Guard
ED61BLM	Black - Panic Shield, PB1142SS 42" Stainless Steel Panic Bar, ED-SB Strike Bracket, ED-GB200 Gate Box, 285-P Keyless Panic Trim, Latch Protector, Jamb Stop, Max Guard
ED61SL	Silver - Panic Shield, PB1142 42" Panic Bar, ED-SB Strike Bracket, ED-GB200 Gate Box, 285-P Keyless Panic Trim, Latch Protector, Jamb Stop, Max Guard
ED61SM	Silver - Panic Shield, PB1100SS Stainless Steel Panic Bar, ED-SB Strike Bracket, ED-GB200 Gate Box, 285-P Keyless Panic Trim, Latch Protector, Jamb Stop, Max Guard
ED61SF	Silver - Panic Shield, PB1100FR Fire Rated Panic Bar, ED-SB Strike Bracket, ED-GB200 Gate Box, 285-P Keyless Panic Trim, Latch Protector, Jamb Stop, Max Guard
ED61SLM	Silver - Panic Shield, PB1142SS 42" Stainless Steel Panic Bar, ED-SB Strike Bracket, ED-GB200 Gate Box, 285-P Keyless Panic Trim, Latch Protector, Jamb Stop, Max Guard



PS42 Standard Panic Shield Value Kits, V40 Panic Bar included

Part Number	Description
PS42B	Black - Panic Shield, Detex V-40 Panic Bar, PSSB Strike Bracket
PS42S	Silver - Panic Shield, Detex V-40 Panic Bar, PSSB Strike Bracket

AVAILABLE UPGRADES

PS42BL	Black - Panic Shield, Detex V-40x48 42" Panic Bar, PSSB Strike Bracket
PS42BW	Black - Panic Shield, Detex V-40xW Weatherized Panic Bar, PSSB Strike Bracket
PS42B7	Black - Panic Shield, Detex V-40x711 Black Panic Bar, PSSB Strike Bracket
PS42BL7	Black - Panic Shield, Detex V-40x711x48 42" Black Panic Bar, PSSB Strike Bracket
PS42SL	Silver - Panic Shield, Detex V-40x48 42" Panic Bar, PSSB Strike Bracket
PS42SW	Silver - Panic Shield, Detex V-40xW Weatherized Panic Bar, PSSB Strike Bracket
PS42S7	Silver - Panic Shield, Detex V-40x711 Black Panic Bar, PSSB Strike Bracket
PS42SL7	Silver - Panic Shield, Detex V-40x711x48 42" Black Panic Bar, PSSB Strike Bracket



PS52 Standard Panic Shield Safety Kits, V40 Panic Bar included

Part Number	Description
PS52B	Black - Panic Shield, Detex V-40 Panic Bar, PSSB Strike Bracket, PSGB5 Key Box, Key Cylinder
PS52S	Silver - Panic Shield, Detex V-40 Panic Bar, PSSB Strike Bracket, PSGB5 Key Box, Key Cylinder

AVAILABLE UPGRADES

PS52B7	Black - Panic Shield, Detex V40x711 Panic Bar, PSSB Strike Bracket, PSGB5 Key Box, Key Cylinder
PS52BL	Black - Panic Shield, Detex V-40x48 42" Panic Bar, PSSB Strike Bracket, PSGB5 Key Box, Key Cylinder
PS52BW	Black - Panic Shield, Detex V-40xW Weatherized Panic Bar, PSSB Strike Bracket, PSGB5 Key Box, Key Cylinder
PS52BL7	Black - Panic Shield, Detex V-40x711x48 42" Black Panic Bar, PSSB Strike Bracket, PSGB5 Key Box, Key Cylinder
PS52SL	Silver - Panic Shield, Detex V-40x48 42" Panic Bar, PSSB Strike Bracket, PSGB5 Key Box, Key Cylinder
PS52SW	Silver - Panic Shield, Detex V-40xW Weatherized Panic Bar, PSSB Strike Bracket, PSGB5 Key Box, Key Cylinder
PS52S7	Silver - Panic Shield, Detex V40x711 Panic Bar, PSSB Strike Bracket, PSGB5 Key Box, Key Cylinder
PS52SL7	Silver - Panic Shield, Detex V-40x711x48 42" Black Panic Bar, PSSB Strike Bracket, PSGB5 Key Box, Key Cylinder

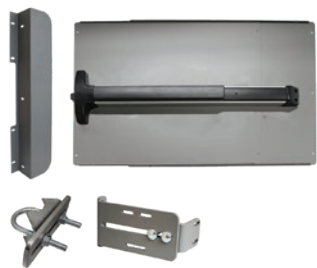


PS62 Standard Panic Shield Security Kits, V40 Panic Bar included

Part Number	Description
PS62B	Black - Panic Shield, Detex V-40 Panic Bar, PSSB Strike Bracket, PSGB200 Gate Box, 285-P Keyless Panic Trim, Max Guard
PS62S	Silver - Panic Shield, Detex V-40 Panic Bar, PSSB Strike Bracket, PSGB200 Gate Box, 285-P Keyless Panic Trim, Max Guard

AVAILABLE UPGRADES

PS62BL	Black - Panic Shield, Detex V-40x48 42" Panic Bar, PSSB Strike Bracket, PSGB200 Gate Box, 285-P Keyless Panic Trim, Max Guard
PS62BW	Black - Panic Shield, Detex V-40xW Weatherized Panic Bar, PSSB Strike Bracket, PSGB200 Gate Box, 285-P Keyless Panic Trim, Max Guard
PS62B7	Black - Panic Shield, Detex V-40x711 Black Panic Bar, PSSB Strike Bracket, PSGB200 Gate Box, 285-P Keyless Panic Trim, Max Guard
PS62BL7	Black - Panic Shield, Detex V-40x711x48 42" Black Panic Bar, PSSB Strike Bracket, PSGB200 Gate Box, 285-P Keyless Panic Trim, Max Guard
PS62SL	Silver - Panic Shield, Detex V-40x48 42" Panic Bar, PSSB Strike Bracket, PSGB200 Gate Box, 285-P Keyless Panic Trim, Max Guard
PS62SW	Silver - Panic Shield, Detex V-40xW Weatherized Panic Bar, PSSB Strike Bracket, PSGB200 Gate Box, 285-P Keyless Panic Trim, Max Guard
PS62S7	Silver - Panic Shield, Detex V-40x711 Black Panic Bar, PSSB Strike Bracket, PSGB200 Gate Box, 285-P Keyless Panic Trim, Max Guard
PS62SL7	Silver - Panic Shield, Detex V-40x711x48 42" Black Panic Bar, PSSB Strike Bracket, PSGB200 Gate Box, 285-P Keyless Panic Trim, Max Guard



ED42 EDGE Panic Shield Value Kits, V40 Panic Bar included

Part Number	Description
ED42B	Black - Panic Shield, Detex V-40 Panic Bar, ED-SB Strike Bracket, Latch Protector, Jamb Stop
ED42S	Silver - Panic Shield, Detex V-40 Panic Bar, ED-SB Strike Bracket, Latch Protector, Jamb Stop

AVAILABLE UPGRADES

ED42BL	Black - Panic Shield, Detex V-40x48 42" Panic Bar, ED-SB Strike Bracket, Latch Protector, Jamb Stop
ED42BW	Black - Panic Shield, Detex V-40xW Weatherized Panic Bar, ED-SB Strike Bracket, Latch Protector, Jamb Stop
ED42B7	Black - Panic Shield, Detex V-40x711 Black Panic Bar, ED-SB Strike Bracket, Latch Protector, Jamb Stop
ED42BL7	Black - Panic Shield, Detex V-40x711x48 42" Black Panic Bar, ED-SB Strike Bracket, Latch Protector, Jamb Stop
ED42SL	Silver - Panic Shield, Detex V-40x48 42" Panic Bar, ED-SB Strike Bracket, Latch Protector, Jamb Stop
ED42SW	Silver - Panic Shield, Detex V-40xW Weatherized Panic Bar, ED-SB Strike Bracket, Latch Protector, Jamb Stop
ED42S7	Silver - Panic Shield, Detex V-40x711 Black Panic Bar, ED-SB Strike Bracket, Latch Protector, Jamb Stop
ED42SL7	Silver - Panic Shield, Detex V-40x711x48 42" Black Panic Bar, ED-SB Strike Bracket, Latch Protector, Jamb Stop



ED52 EDGE Panic Shield Safety Kits, V40 Panic Bar included

Part Number	Description
PS52B	Black - Panic Shield, Detex V-40 Panic Bar, PSSB Strike Bracket, PSGB5 Key Box, Key Cylinder
PS52S	Silver - Panic Shield, Detex V-40 Panic Bar, PSSB Strike Bracket, PSGB5 Key Box, Key Cylinder

AVAILABLE UPGRADES

PS52B7	Black - Panic Shield, Detex V40x711 Panic Bar, PSSB Strike Bracket, PSGB5 Key Box, Key Cylinder
PS52BL	Black - Panic Shield, Detex V-40x48 42" Panic Bar, PSSB Strike Bracket, PSGB5 Key Box, Key Cylinder
PS52BW	Black - Panic Shield, Detex V-40xW Weatherized Panic Bar, PSSB Strike Bracket, PSGB5 Key Box, Key Cylinder
PS52BL7	Black - Panic Shield, Detex V-40x711x48 42" Black Panic Bar, PSSB Strike Bracket, PSGB5 Key Box, Key Cylinder
PS52SL	Silver - Panic Shield, Detex V-40x48 42" Panic Bar, PSSB Strike Bracket, PSGB5 Key Box, Key Cylinder
PS52SW	Silver - Panic Shield, Detex V-40xW Weatherized Panic Bar, PSSB Strike Bracket, PSGB5 Key Box, Key Cylinder
PS52S7	Silver - Panic Shield, Detex V40x711 Panic Bar, PSSB Strike Bracket, PSGB5 Key Box, Key Cylinder
PS52SL7	Silver - Panic Shield, Detex V-40x711x48 42" Black Panic Bar, PSSB Strike Bracket, PSGB5 Key Box, Key Cylinder



ED62 EDGE Panic Shield Security Kits, V40 Panic Bar included

Part Number	Description
PS62B	Black - Panic Shield, Detex V-40 Panic Bar, PSSB Strike Bracket, PSGB200 Gate Box, 285-P Keyless Panic Trim, Max Guard
PS62S	Silver - Panic Shield, Detex V-40 Panic Bar, PSSB Strike Bracket, PSGB200 Gate Box, 285-P Keyless Panic Trim, Max Guard

AVAILABLE UPGRADES

PS62BL	Black - Panic Shield, Detex V-40x48 42" Panic Bar, PSSB Strike Bracket, PSGB200 Gate Box, 285-P Keyless Panic Trim, Max Guard
PS62BW	Black - Panic Shield, Detex V-40xW Weatherized Panic Bar, PSSB Strike Bracket, PSGB200 Gate Box, 285-P Keyless Panic Trim, Max Guard
PS62B7	Black - Panic Shield, Detex V-40x711 Black Panic Bar, PSSB Strike Bracket, PSGB200 Gate Box, 285-P Keyless Panic Trim, Max Guard
PS62BL7	Black - Panic Shield, Detex V-40x711x48 42" Black Panic Bar, PSSB Strike Bracket, PSGB200 Gate Box, 285-P Keyless Panic Trim, Max Guard
PS62SL	Silver - Panic Shield, Detex V-40x48 42" Panic Bar, PSSB Strike Bracket, PSGB200 Gate Box, 285-P Keyless Panic Trim, Max Guard
PS62SW	Silver - Panic Shield, Detex V-40xW Weatherized Panic Bar, PSSB Strike Bracket, PSGB200 Gate Box, 285-P Keyless Panic Trim, Max Guard
PS62S7	Silver - Panic Shield, Detex V-40x711 Black Panic Bar, PSSB Strike Bracket, PSGB200 Gate Box, 285-P Keyless Panic Trim, Max Guard
PS62SL7	Silver - Panic Shield, Detex V-40x711x48 42" Black Panic Bar, PSSB Strike Bracket, PSGB200 Gate Box, 285-P Keyless Panic Trim, Max Guard



PS43 Standard Panic Shield Value Kits, V40 Alarm Bar included

Part Number	Description
PS43B	Black - Panic Shield, Detex V-40xEBxW Weatherized Alarm Panic Bar, PSSB Strike Bracket
PS43S	Silver - Panic Shield, Detex V-40 EBxW Weatherized Alarm Panic Bar, PSSB Strike Bracket

AVAILABLE UPGRADES

PS43BL	Black - Panic Shield, Detex V-40xEBxWx48 42" Weatherized Alarm Panic Bar, PSSB Strike Bracket
PS43B7	Black - Panic Shield, Detex V-40xEBxWx711 Black Weatherized Alarm Panic Bar, PSSB Strike Bracket
PS43BL7	Black - Panic Shield, Detex V-40xEBxWx711x48 42" Black Weatherized Alarm Panic Bar, PSSB Strike Bracket
PS43SL	Silver - Panic Shield, Detex V-40xEBxWx48 42" Weatherized Alarm Panic Bar, PSSB Strike Bracket
PS43S7	Silver - Panic Shield, Detex V-40xEBxWx711 Black Weatherized Alarm Panic Bar, PSSB Strike Bracket
PS43SL7	Silver - Panic Shield, Detex V-40xEBxWx711x48 42" Black Weatherized Alarm Panic Bar, PSSB Strike Bracket



PS53 Standard Panic Shield Safety Kits, V40 Alarm Bar included

Part Number	Description
PS53B	Black - Panic Shield, Detex V-40xEBxW Weatherized Alarm Panic Bar, PSSB Strike Bracket, PSGB5 Key Box, Key Cylinder
PS53S	Silver - Panic Shield, Detex V-40xEBxW Weatherized Alarm Panic Bar, PSSB Strike Bracket, PSGB5 Key Box, Key Cylinder

AVAILABLE UPGRADES

PS53BL	Black - Panic Shield, Detex V-40xEBxWx48 42" Weatherized Alarm Panic Bar, PSSB Strike Bracket, PSGB5 Key Box, Key Cylinder
PS53B7	Black - Panic Shield, Detex V-40xEBxWx711 Black Weatherized Alarm Panic Bar, PSSB Strike Bracket, PSGB5 Key Box, Key Cylinder
PS53BL7	Black - Panic Shield, Detex V-40xEBxWx711x48 42" Black Weatherized Alarm Panic Bar, PSSB Strike Bracket, PSGB5 Key Box, Key Cylinder
PS53SL	Silver - Panic Shield, Detex V-40xEBxWx48 42" Weatherized Alarm Panic Bar, PSSB Strike Bracket, PSGB5 Key Box, Key Cylinder
PS53S7	Silver - Panic Shield, Detex V-40xEBxWx711 Black Weatherized Alarm Panic Bar, PSSB Strike Bracket, PSGB5 Key Box, Key Cylinder
PS53SL7	Silver - Panic Shield, Detex V-40xEBxWx711x48 42" Black Weatherized Alarm Panic Bar, PSSB Strike Bracket, PSGB5 Key Box, Key Cylinder



PS63 Standard Panic Shield Security Kits, V40 Alarm Bar included

Part Number	Description
PS63B	Black - Panic Shield, Detex V-40xEBxW Weatherized Alarm Panic Bar, PSSB Strike Bracket, PSGB200 Gate Box, 285-P Keyless Panic Trim, Max Guard
PS63S	Silver - Panic Shield, Detex V-40xEBxW Weatherized Alarm Panic Bar, PSSB Strike Bracket, PSGB200 Gate Box, 285-P Keyless Panic Trim, Max Guard

AVAILABLE UPGRADES

PS63BL	Black - Panic Shield, Detex V-40xEBxWx48 42" Weatherized Alarm Panic Bar, PSSB Strike Bracket, PSGB200 Gate Box, 285-P Keyless Panic Trim, Max Guard
PS63B7	Black - Panic Shield, Detex V-40xEBxWx711 Black Weatherized Alarm Panic Bar, PSSB Strike Bracket, PSGB200 Gate Box, 285-P Keyless Panic Trim, Max Guard
PS63BL7	Black - Panic Shield, Detex V-40xEBxWx711x48 42" Black Weatherized Alarm Panic Bar, PSSB Strike Bracket, PSGB200 Gate Box, 285-P Keyless Panic Trim, Max Guard
PS63SL	Silver - Panic Shield, Detex V-40xEBxWx48 42" Weatherized Alarm Panic Bar, PSSB Strike Bracket, PSGB200 Gate Box, 285-P Keyless Panic Trim, Max Guard
PS63S7	Silver - Panic Shield, Detex V-40xEBxWx711 Black Weatherized Alarm Panic Bar, PSSB Strike Bracket, PSGB200 Gate Box, 285-P Keyless Panic Trim, Max Guard
PS63SL7	Silver - Panic Shield, Detex V-40xEBxWx711x48 42" Black Weatherized Alarm Panic Bar, PSSB Strike Bracket, PSGB200 Gate Box, 285-P Keyless Panic Trim, Max Guard



ED43 EDGE Panic Shield Value Kits, V40 Alarm Bar included

Part Number	Description
ED43B	Black - Panic Shield, Detex V-40xEBxW Weatherized Alarm Panic Bar, ED-SB Strike Bracket, Latch Protector, Jamb Stop
ED43S	Silver - Panic Shield, Detex V-40xEBxW Weatherized Alarm Panic Bar, ED-SB Strike Bracket, Latch Protector, Jamb Stop

AVAILABLE UPGRADES

ED43BL	Black - Panic Shield, Detex V-40xEBxWx48 42" Weatherized Alarm Panic Bar, ED-SB Strike Bracket, Latch Protector, Jamb Stop
ED43B7	Black - Panic Shield, Detex V-40xEBxW711 Black Weatherized Alarm Panic Bar, ED-SB Strike Bracket, Latch Protector, Jamb Stop
ED43BL7	Black - Panic Shield, Detex V-40xEBxW711x48 42" Black Weatherized Alarm Panic Bar, ED-SB Strike Bracket, Latch Protector, Jamb Stop
ED43SL	Silver - Panic Shield, Detex V-40xEBxWx48 42" Weatherized Alarm Panic Bar, ED-SB Strike Bracket, Latch Protector, Jamb Stop
ED43S7	Silver - Panic Shield, Detex V-40xEBxW711 Black Weatherized Alarm Panic Bar, ED-SB Strike Bracket, Latch Protector, Jamb Stop
ED43SL7	Silver - Panic Shield, Detex V-40xEBxW711x48 42" Black Weatherized Alarm Panic Bar, ED-SB Strike Bracket, Latch Protector, Jamb Stop



ED53 EDGE Panic Shield Safety Kits, V40 Alarm Bar included

Part Number	Description
ED53B	Black - Panic Shield, Detex V-40xEBxW Weatherized Alarm Panic Bar, ED-SB Strike Bracket, ED-GB5 Key Box, Key Cylinder, Latch Protector, Jamb Stop
ED53S	Silver - Panic Shield, Detex V-40xEBxW Weatherized Alarm Panic Bar, ED-SB Strike Bracket, ED-GB5 Key Box, Key Cylinder, Latch Protector, Jamb Stop

AVAILABLE UPGRADES

ED53BL	Black - Panic Shield, Detex V-40xEBxWx48 42" Weatherized Alarm Panic Bar, ED-SB Strike Bracket, ED-GB5 Key Box, Key Cylinder, Latch Protector, Jamb Stop
ED53B7	Black - Panic Shield, Detex V-40xEBxWx711 Black Weatherized Alarm Panic Bar, ED-SB Strike Bracket, ED-GB5 Key Box, Key Cylinder, Latch Protector, Jamb Stop
ED53BL7	Black - Panic Shield, Detex V-40xEBxWx711x48 42" Black Weatherized Alarm Panic Bar, ED-SB Strike Bracket, ED-GB5 Key Box, Key Cylinder, Latch Protector, Jamb Stop
ED53SL	Silver - Panic Shield, Detex V-40xEBxWx48 42" Weatherized Alarm Panic Bar, ED-SB Strike Bracket, ED-GB5 Key Box, Key Cylinder, Latch Protector, Jamb Stop
ED53S7	Silver - Panic Shield, Detex V-40xEBxWx711 Black Weatherized Alarm Panic Bar, ED-SB Strike Bracket, ED-GB5 Key Box, Key Cylinder, Latch Protector, Jamb Stop
ED53SL7	Silver - Panic Shield, Detex V-40xEBxWx711x48 42" Black Weatherized Alarm Panic Bar, ED-SB Strike Bracket, ED-GB5 Key Box, Key Cylinder, Latch Protector, Jamb Stop



ED63 EDGE Panic Shield Security Kits, V40 Alarm Bar included

Part Number	Description
ED63B	Black - Panic Shield, Detex V-40xEBxW Weatherized Alarm Panic Bar, ED-SB Strike Bracket, ED-GB200 Gate Box, 285-P Keyless Panic Trim, Latch Protector, Jamb Stop, Max Guard
ED63S	Silver - Panic Shield, Detex V-40xEBxW Weatherized Alarm Panic Bar, ED-SB Strike Bracket, ED-GB200 Gate Box, 285-P Keyless Panic Trim, Latch Protector, Jamb Stop, Max Guard

AVAILABLE UPGRADES

ED63BL	Black - Panic Shield, Detex V-40xEBxWx48 42" Weatherized Alarm Panic Bar, ED-SB Strike Bracket, ED-GB200 Gate Box, 285-P Keyless Panic Trim, Latch Protector, Jamb Stop, Max Guard
ED63B7	Black - Panic Shield, Detex V-40xEBxWx711 Black Weatherized Alarm Panic Bar, ED-SB Strike Bracket, ED-GB200 Gate Box, 285-P Keyless Panic Trim, Latch Protector, Jamb Stop, Max Guard
ED63BL7	Black - Panic Shield, Detex V-40xEBxWx711x48 42" Black Weatherized Alarm Panic Bar, ED-SB Strike Bracket, ED-GB200 Gate Box, 285-P Keyless Panic Trim, Latch Protector, Jamb Stop, Max Guard
ED63SL	Silver - Panic Shield, Detex V-40xEBxWx48 42" Weatherized Alarm Panic Bar, ED-SB Strike Bracket, ED-GB200 Gate Box, 285-P Keyless Panic Trim, Latch Protector, Jamb Stop, Max Guard
ED63S7	Silver - Panic Shield, Detex V-40xEBxWx711 Black Weatherized Alarm Panic Bar, ED-SB Strike Bracket, ED-GB200 Gate Box, 285-P Keyless Panic Trim, Latch Protector, Jamb Stop, Max Guard
ED63SL7	Silver - Panic Shield, Detex V-40xEBxWx711x48 42" Black Weatherized Alarm Panic Bar, ED-SB Strike Bracket, ED-GB200 Gate Box, 285-P Keyless Panic Trim, Latch Protector, Jamb Stop, Max Guard



PS44 Standard Panic Shield Value Kits, PB2500 Panic Bar included

Part Number	Description
PS44B	Black - Panic Shield, PB2500 Panic Bar, PSSB Strike Bracket
PS44S	Silver - Panic Shield, PB2500 Panic Bar, PSSB Strike Bracket

AVAILABLE UPGRADES

PS44BL	Black - Panic Shield, PB2542 42" Panic Bar, PSSB Strike Bracket
PS44SL	Silver - Panic Shield, PB2542 42" Panic Bar, PSSB Strike Bracket



PS54 Standard Panic Shield Safety Kits, PB2500 Panic Bar included

Part Number	Description
PS54B	Black - Panic Shield, PB2500 Panic Bar, PSSB Strike Bracket, PSGB5 Key Box, Key Cylinder
PS54S	Silver - Panic Shield, PB2500 Panic Bar, PSSB Strike Bracket, PSGB5 Key Box, Key Cylinder

AVAILABLE UPGRADES

PS54BL	Black - Panic Shield, PB2542 42" Panic Bar, PSSB Strike Bracket, PSGB5 Key Box, Key Cylinder
PS54SL	Silver - Panic Shield, PB2542 42" Panic Bar, PSSB Strike Bracket, PSGB5 Key Box, Key Cylinder



PS64 Standard Panic Shield Security Kits, PB2500 Panic Bar included

Part Number	Description
PS64B	Black - Panic Shield, PB2500 Panic Bar, PSSB Strike Bracket, PSGB200 Gate Box, 285-P Keyless Panic Trim, Max Guard
PS64S	Silver - Panic Shield, PB2500 Panic Bar, PSSB Strike Bracket, PSGB200 Gate Box, 285-P Keyless Panic Trim, Max Guard

AVAILABLE UPGRADES

PS64BL	Black - Panic Shield, PB2542 42" Panic Bar, PSSB Strike Bracket, PSGB200 Gate Box, 285-P Keyless Panic Trim, Max Guard
PS64SL	Silver - Panic Shield, PB2542 42" Panic Bar, PSSB Strike Bracket, PSGB200 Gate Box, 285-P Keyless Panic Trim, Max Guard



ED44 EDGE Panic Shield Value Kits, PB2500 Panic Bar included

Part Number	Description
ED44B	Black - Panic Shield, PB2500 Panic Bar, ED-SB Strike Bracket, Latch Protector, Jamb Stop
ED44S	Silver - Panic Shield, PB2500 Panic Bar, ED-SB Strike Bracket, Latch Protector, Jamb Stop

AVAILABLE UPGRADES

- ED44BL Black - Panic Shield, PB2542 42" Panic Bar, ED-SB Strike Bracket, Latch Protector, Jamb Stop
 ED44SL Silver - Panic Shield, PB2542 42" Panic Bar, ED-SB Strike Bracket, Latch Protector, Jamb Stop



ED54 EDGE Panic Shield Safety Kits, PB2500 Panic Bar included

Part Number	Description
ED54B	Black - Panic Shield, PB2500 Panic Bar, ED-SB Strike Bracket, ED-GB5 Key Box, Key Cylinder, Latch Protector, Jamb Stop
ED54S	Silver - Panic Shield, PB2500 Panic Bar, ED-SB Strike Bracket, ED-GB5 Key Box, Key Cylinder, Latch Protector, Jamb Stop

AVAILABLE UPGRADES

- ED54BL Black - Panic Shield, PB2542 42" Panic Bar, ED-SB Strike Bracket, ED-GB5 Key Box, Key Cylinder, Latch Protector, Jamb Stop
 ED54SL Silver - Panic Shield, PB2542 42" Panic Bar, ED-SB Strike Bracket, ED-GB5 Key Box, Key Cylinder, Latch Protector, Jamb Stop



ED64 EDGE Panic Shield Security Kits, PB2500 Panic Bar included

Part Number	Description
ED64B	Black - Panic Shield, PB2500 Panic Bar, ED-SB Strike Bracket, ED-GB200 Gate Box, 285-P Keyless Panic Trim, Latch Protector, Jamb Stop, Max Guard
ED64S	Silver - Panic Shield, PB2500 Panic Bar, ED-SB Strike Bracket, ED-GB200 Gate Box, 285-P Keyless Panic Trim, Latch Protector, Jamb Stop, Max Guard

AVAILABLE UPGRADES

- ED64BL Black - Panic Shield, PB2542 42" Panic Bar, ED-SB Strike Bracket, ED-GB200 Gate Box, 285-P Keyless Panic Trim, Latch Protector, Jamb Stop, Max Guard
 ED64SL Silver - Panic Shield, PB2542 42" Panic Bar, ED-SB Strike Bracket, ED-GB200 Gate Box, 285-P Keyless Panic Trim, Latch Protector, Jamb Stop, Max Guard



PS45 Standard Panic Shield Value Kits, PB2500AL Alarm Panic Bar included

Part Number	Description
PS45B	Black - Panic Shield, PB2500AL Alarm Panic Bar, PSSB Strike Bracket
PS45S	Silver - Panic Shield, PB2500AL Alarm Panic Bar, PSSB Strike Bracket

AVAILABLE UPGRADES

PS45BL	Black - Panic Shield, PB2542AL 42" Alarm Panic Bar, PSSB Strike Bracket
PS45SL	Silver - Panic Shield, PB2542AL 42" Alarm Panic Bar, PSSB Strike Bracket



PS55 Standard Panic Shield Safety Kits, PB2500AL Alarm Panic Bar included

Part Number	Description
PS55B	Black - Panic Shield, PB2500AL Panic Bar, PSSB Strike Bracket, PSGB5 Key Box, Key Cylinder
PS55S	Silver - Panic Shield, PB2500AL Alarm Panic Bar, PSSB Strike Bracket, PSGB5 Key Box, Key Cylinder

AVAILABLE UPGRADES

PS55BL	Black - Panic Shield, PB2542AL 42" Alarm Panic Bar, PSSB Strike Bracket, PSGB5 Key Box, Key Cylinder
PS55SL	Silver - Panic Shield, PB2542AL 42" Alarm Panic Bar, PSSB Strike Bracket, PSGB5 Key Box, Key Cylinder



PS65 Standard Panic Shield Security Kits, PB2500AL Alarm Panic Bar included

Part Number	Description
PS65B	Black - Panic Shield, PB2500AL Alarm Panic Bar, PSSB Strike Bracket, PSGB200 Gate Box, 285-P Keyless Panic Trim, Max Guard
PS65S	Silver - Panic Shield, PB2500AL Alarm Panic Bar, PSSB Strike Bracket, PSGB200 Gate Box, 285-P Keyless Panic Trim, Max Guard

AVAILABLE UPGRADES

PS65BL	Black - Panic Shield, PB2542AL 42" Alarm Panic Bar, PSSB Strike Bracket, PSGB200 Gate Box, 285-P Keyless Panic Trim, Max Guard
PS65SL	Silver - Panic Shield, PB2542AL 42" Alarm Panic Bar, PSSB Strike Bracket, PSGB200 Gate Box, 285-P Keyless Panic Trim, Max Guard



ED45 EDGE Panic Shield Value Kits, PB2500AL Alarm Panic Bar included

Part Number	Description
ED45B	Black - Panic Shield, PB2500AL Alarm Panic Bar, ED-SB Strike Bracket, Latch Protector, Jamb Stop
ED45S	Silver - Panic Shield, PB2500AL Alarm Panic Bar, E D-SB Strike Bracket, Latch Protector, Jamb Stop

AVAILABLE UPGRADES

- ED45BL Black - Panic Shield, PB2542AL 42" Alarm Panic Bar, ED-SB Strike Bracket, Latch Protector, Jamb Stop
 ED45SL Silver - Panic Shield, PB2542AL 42" Alarm Panic Bar, ED-SB Strike Bracket, Latch Protector, Jamb Stop



ED55 EDGE Panic Shield Safety Kits, PB2500AL Alarm Panic Bar included

Part Number	Description
ED55B	Black - Panic Shield, PB2500AL Panic Bar, ED-SB Strike Bracket, ED-GB5 Key Box, Key Cylinder, Latch Protector, Jamb Stop
ED55S	Silver - Panic Shield, PB2500AL Alarm Panic Bar, ED-SB Strike Bracket, ED-GB5 Key Box, Key Cylinder, Latch Protector, Jamb Stop

AVAILABLE UPGRADES

- ED55BL Black - Panic Shield, PB2542AL 42" Alarm Panic Bar, ED-SB Strike Bracket, ED-GB5 Key Box, Key Cylinder, Latch Protector, Jamb Stop
 ED55SL Silver - Panic Shield, PB2542AL 42" Alarm Panic Bar, ED-SB Strike Bracket, ED-GB5 Key Box, Key Cylinder, Latch Protector, Jamb Stop



ED65 EDGE Panic Shield Security Kits, PB2500AL Alarm Panic Bar included

Part Number	Description
ED65B	Black - Panic Shield, PB2500AL Alarm Panic Bar, ED-SB Strike Bracket, ED-GB200 Gate Box, 285-P Keyless Panic Trim, Latch Protector, Jamb Stop, Max Guard
ED65S	Silver - Panic Shield, PB2500AL Alarm Panic Bar, ED-SB Strike Bracket, ED-GB200 Gate Box, 285-P Keyless Panic Trim, Latch Protector, Jamb Stop, Max Guard

AVAILABLE UPGRADES

- ED65BL Black - Panic Shield, PB2542AL 42" Alarm Panic Bar, ED-SB Strike Bracket, ED-GB200 Gate Box, 285-P Keyless Panic Trim, Latch Protector, Jamb Stop, Max Guard
 ED65SL Silver - Panic Shield, PB2542AL 42" Alarm Panic Bar, ED-SB Strike Bracket, ED-GB200 Gate Box, 285-P Keyless Panic Trim, Latch Protector, Jamb Stop, Max Guard

PANIC SHIELD KITS

Contents of kits are indicated by **x** below. See “How to Order Panic Shield Kit” for available panic bar upgrades.

Order #	Value Safety Security	24" Shield	PB1100	V40	V40xEBxW	PB2500	PB2500 Alarm	Strike Bracket	Key Box	Keyed Cylinder	Keyless Lock Trim Box	285P Keyless Trim	Max Guard	LP	Jamb Stop
---------	-----------------------------	---------------	--------	-----	----------	--------	-----------------	-------------------	------------	-------------------	-----------------------------	-------------------------	--------------	----	--------------

STANDARD KITS - lockeyusa.com/standard-kits

PS40	Value	x						x							
PS41	Value	x	x					x							
PS42	Value	x		x				x							
PS43	Value	x			x			x							
PS44	Value	x				x		x							
PS45	Value	x					x	x							
PS50	Safety	x						x	x	x					
PS51	Safety	x	x					x	x	x					
PS52	Safety	x		x				x	x	x					
PS53	Safety	x			x			x	x	x					
PS54	Safety	x				x		x	x	x					
PS55	Safety	x					x	x	x	x					
PS60	Security	x						x			x	x	x		
PS61	Security	x	x					x			x	x	x		
PS62	Security	x		x				x			x	x	x		
PS63	Security	x			x			x			x	x	x		
PS64	Security	x				x		x			x	x	x		
PS65	Security	x					x	x			x	x	x		

EDGE KITS - lockeyusa.com/edge-kits

ED40	Value	x						x						x	x
ED41	Value	x	x					x						x	x
ED42	Value	x		x				x						x	x
ED43	Value	x			x			x						x	x
ED44	Value	x				x		x						x	x
ED45	Value	x					x	x						x	x
ED50	Safety	x						x	x	x				x	x
ED51	Safety	x	x					x	x	x				x	x
ED52	Safety	x		x				x	x	x				x	x
ED53	Safety	x			x			x	x	x				x	x
ED54	Safety	x				x		x	x	x				x	x
ED55	Safety	x					x	x	x	x				x	x
ED60	Security	x						x			x	x	x	x	x
ED61	Security	x	x					x			x	x	x	x	x
ED62	Security	x		x				x			x	x	x	x	x
ED63	Security	x			x			x			x	x	x	x	x
ED64	Security	x				x		x			x	x	x	x	x
ED65	Security	x					x	x			x	x	x	x	x

ELECTRONIC LOCKS

- Battery-powered electronic lock
- Remote capable (1 included, up to 5 capable)
- Up to 6 user codes, 4-10 digits in length
- Key Override (Schlage keyway)
- Auto-locking function



E915 Electronic Deadbolt with Remote Control

Part Number	Description
E915-(finish)	Electronic Deadbolt with Remote Control

Available Finishes : Antique Brass (AB), Bright Brass (BB), Satin Nickel (SN), Antique/Oil Rubbed Bronze (OIL)

Dimensions & Specs : EXTERIOR DIMENSIONS: 5 1/8" L X 3 1/8" W X 1 3/8" D, INTERIOR DIMENSIONS: 7 1/4" L X 2 7/8" W X 1 3/4" D, DOOR THICKNESS: 1 3/8" TO 1 3/4", MATERIAL: STAINLESS STEEL, LATCH: ADJUSTABLE, CYLINDER: 5 PIN SCHLAGE KEYWAY, POWER: 4 AA ALKALINE BATTERIES, KEYS INCLUDED: 2, WEATHER RESISTANT EXTERIOR LOCK BODY, INSIDE LOCK BODY FOR INTERIOR USE ONLY



E995 Electronic Lever with Remote Control

Part Number	Description
E995-(finish)	Electronic Lever with Remote Control

Available Finishes : Antique Brass (AB), Bright Brass (BB), Satin Nickel (SN), Antique/Oil Rubbed Bronze (OIL)

Dimensions & Specs : EXTERIOR DIMENSIONS: 5 1/8" L X 3 1/8" W X 2 5/8" D, INTERIOR DIMENSIONS: 7 1/2" L X 2 7/8" W X 3 3/8" D, DOOR THICKNESS: 1 3/8" TO 1 3/4", MATERIAL: STAINLESS STEEL, LATCH: ADJUSTABLE, CYLINDER: 5 PIN SCHLAGE KEYWAY, POWER: 4 AA ALKALINE BATTERIES, KEYS INCLUDED: 2, WEATHER RESISTANT EXTERIOR LOCK BODY, INSIDE LOCK BODY FOR INTERIOR USE ONLY



EREMOTE

- Remote control for use with E910*, E915, E930*, E985*, E995
- *discontinued

Part Number	Description
EREMOTE	Remote control

WIFI LOCKS

- Designed for easy installation, connection and use - no additional controller or hub required
- Monitor and control via web or mobile app with access event notifications
- Utilize temporary codes for guests or visitor management
- Integrates with Airbnb, VRBO and more
- Lock requires a monthly subscription, managed by RemoteLock, to take advantage of all WiFi capabilities



W915 WiFi Deadbolt Lock

Part Number	Description
W915SN	WiFi Deadbolt Lock, Satin Nickel

Available Finishes : Satin Nickel (SN)

Dimensions & Specs : EXTERIOR DIMENSIONS: 5 1/8" L X 3 1/8" W X 1 1/2" D, INTERIOR DIMENSIONS: 7 1/2" L X 2 7/8" W X 2 3/4" D, DOOR THICKNESS: 1 3/8" TO 1 3/4", MATERIAL: ZINC ALLOY, LATCH: ADJUSTABLE, CYLINDER: 5 PIN SCHLAGE KEYWAY, OPERATING TEMPERATURE: -31°F (-35°C) TO 151°F (66°C), DOOR HANDING: NON-HANDED, FIELD REVERSIBLE, POWER: 4 AA (NOT INCLUDED), KEYS INCLUDED: 2, CODE CAPACITY: UP TO 3,500, COMMUNICATION: SINGLE BAND 2.4GHZ WIFI (IEEE 802.11B/G/N) WITH WPA/WPA2



W995 WiFi Lever Lock

Part Number	Description
W995SN	WiFi Lever Lock, Satin Nickel

Available Finishes : Satin Nickel (SN)

Dimensions & Specs : EXTERIOR DIMENSIONS: 5 1/8" L X 3 1/8" W X 2 1/2" D, INTERIOR DIMENSIONS: 7 1/2" L X 2 7/8" W X 3 3/8" D, DOOR THICKNESS: 1 3/8" TO 1 3/4", MATERIAL: ZINC ALLOY, LATCH: ADJUSTABLE, CYLINDER: 5 PIN SCHLAGE KEYWAY, OPERATING TEMPERATURE: -31°F (-35°C) TO 151°F (66°C), DOOR HANDING: NON-HANDED, FIELD REVERSIBLE, POWER: 4 AA (NOT INCLUDED), KEYS INCLUDED: 2, CODE CAPACITY: UP TO 3,500, COMMUNICATION: SINGLE BAND 2.4GHZ WIFI (IEEE 802.11B/G/N) WITH WPA/WPA2

SUBSCRIPTION INFORMATION

LockeyUSA WiFi Smart Locks require a subscription, managed by RemoteLock.

- Designed to be easy to install, connect, manage & use
- Embedded WiFi for standard connectivity. No gateway or hub required
- Remote control & monitoring from anywhere using your smartphone or laptop
- Supports passage mode, auto-lock mode & passage schedules
- Store up to 40 weekly access schedules (e.g., M-F, 9-5)

RemoteLOCK

ELECTRONIC CABINET LOCKS

- Key override
- Public and Private modes
- Battery condition indicator
- Audible keypad (can be turned on/off)
- Auto unlock mode (can be turned on/off)

Available Finishes : Silver (S), Black (B), White (W), Custom*
 *Contact us for MOQ and lead time for custom orders.

Keypad Direction : Vertical (V), Right (R), Left (L)



EC780 Electronic Cabinet Lock

Part Number	Description
EC780-(finish)-(keypad direction)	Electronic Cabinet Lock
EC780-(finish)-(keypad direction)-3	Electronic Cabinet Lock with SLAM Latch



EC781 Electronic Cabinet Lock for Wet/Chlorinated Areas

Part Number	Description
EC781-(finish)-(keypad direction)	Electronic Cabinet Lock for Wet/Chlorinated Areas



EC782 Electronic Cabinet Lock with ADA Lever Handle

Part Number	Description
EC781-(finish)-(keypad direction)	Electronic Cabinet Lock for Wet/Chlorinated Areas

ELECTRONIC CABINET LOCKS



EC790 Electronic Locker Lock

- Key override
- Public and Private modes
- Fits most standard metal lockers "out of the box"
- Simple click together fit, with 2 nuts to secure
- Designed to work with locking bar lifter

Available Finishes : Silver (S)

Custom* *Contact us for MOQ and lead time for custom orders.

Part Number	Description
EC790-(finish)	Electronic Locker Lock



EC950 Horizon Electronic Keypad Combination Lock

- Key override
- Public and Private modes
- Battery condition indicator
- Audible keypad (can be turned on/off)
- Flush or surface mounting with secure pop-out turn handle (flush when locked)

Available Finishes : Silver (S), Black (B),

Custom* *Contact us for MOQ and lead time for custom orders.

Keypad Direction : Vertical (V), Right (R), Left (L)

Part Number	Description
EC950-(finish)-(keypad direction)	Horizon Electronic Keypad Combination Lock



GE370 Gemini Electronic Keypad Combination Lock

- Key override
- Public and Private modes
- Battery condition indicator
- Audible keypad (can be turned on/off)
- Auto unlock mode (can be turned on/off)

Available Finishes : Silver (S), Black (B), White (W)

Keypad Direction : Vertical (V), Right (R), Left (L)

Part Number	Description
GE370-(finish)-(keypad direction)	Gemini Electronic Keypad Combination Lock

WARRANTY STATEMENTS

LockeyUSA reserves the right, at its sole discretion, to request additional information in order to process Warranty Claims more effectively and efficiently. If the Product(s) are deemed to be covered by the applicable LockeyUSA Warranty, LockeyUSA will repair or replace the defective product(s). LockeyUSA will return ship Product(s) covered by the LockeyUSA Warranty to Purchaser (at its sole expense) to locations in the United States. For International Warranty Claims, Purchaser will be responsible for any and all shipping charges, duties and fees.

Digital Mechanical Keyless Locks (NO Key Override):

Lifetime Mechanical Warranty

All Lockey mechanical keyless locks are covered by a Lifetime Mechanical Warranty. The LockeyUSA Lifetime Mechanical Warranty covers manufacturer defects to the lock. The Lifetime Mechanical Warranty does NOT cover the finish of the lock or defects resulting from vandalism, and improper installation or use. Use of a non-synthetic lubricant may damage your lock and will not be covered under warranty. Adjustable latch and spindle are not covered under our Lifetime Mechanical Warranty and may need to be replaced in time. Additionally the Lifetime Mechanical Warranty does not cover lock tampering. Any attempt to remove the 'Silver Screws' to repair or manipulate the mechanics of the lock, will VOID the Warranty. The Lifetime Mechanical Warranty applies only to Lockey keyless mechanical locks. The Lifetime Mechanical Warranty does NOT apply to key override (KO/KA) locks or any other Lockey product that includes a keyway.

Digital Mechanical Keyless Locks (with Key Override):

Limited Lifetime Warranty

Lockey mechanical keyless locks with the key override (KO/KA) option are covered by a Limited Lifetime Warranty. The LockeyUSA Limited Lifetime Warranty covers manufacturer defects to the lock. The Limited Lifetime Warranty does NOT cover the tailpiece/spindle or cam, including, but not limited to, damage, bends, breaks and/or modifications to the tailpiece/spindle. The Limited Lifetime Warranty does NOT cover the finish of the lock or defects resulting from vandalism, and improper installation or use. Use of a non-synthetic lubricant may damage your lock and will not be covered under warranty. Adjustable latch and spindle are not covered under our Lifetime Mechanical Warranty and may need to be replaced in time. Additionally the Lifetime Mechanical Warranty does not cover lock tampering. Any attempt to remove the 'Silver Screws' to repair or manipulate the mechanics of the lock, will VOID the Warranty.

IMPORTANT: Please read/follow installation instructions closely. The warranty may be void if the Silver Screws are removed, or if the lock is not kept in the 'Clear' position while the code is being changed. The LockeyUSA Lifetime Mechanical Warranty and Limited Lifetime Warranty cover Lockey mechanical locks manufactured after December 31, 1999. The LockeyUSA Lifetime Mechanical Warranty and Limited Lifetime Mechanical Warranty do NOT cover mechanical locks manufactured on or before December 31, 1999. Warranty Claims will only be processed when the product is returned to LockeyUSA by the original Purchaser (at Purchaser's sole expense), accompanied by a LockeyUSA Warranty Claim Form and valid proof of purchase.

Lockey E-Digital Electronic Keypad Locks: One-Year Electronic Warranty

All Lockey E-Digital Electronic Keypad Locks are covered by a One-Year Electronic Warranty. The One-Year Electronic Warranty covers manufacturer defects to the electronics of the lock. The One-Year Electronic Warranty does NOT cover the latch or the tailpiece/spindle, including, but not limited to, damage, bends, breaks and/or modifications to the tailpiece/spindle. Use of a non-synthetic lubricant may damage your lock and will not be covered under warranty. The One-Year Electronic Warranty does NOT cover the finish of the lock or defects resulting from vandalism, and improper installation or use.

IMPORTANT: Please read/follow installation instructions closely. Failure to follow instructions and properly install the product may result in the void of warranty. Warranty Claims will only be processed when the product is returned to LockeyUSA by original Purchaser (at Purchaser's sole expense), accompanied by a LockeyUSA Warranty Claim Form and valid proof of purchase.

Lockey Hydraulic Gate Closers: One-Year Warranty

(includes the following Product #'s)

TB100 | TB175 | TB200/TB400/TB600 | TB250+/TB450+/TB650+

Lockey Hydraulic Gate Closers (not including the TB950 Magnum) are covered by a One-Year Warranty. The One-Year Warranty covers manufacturer defects to the hydraulic gate closer. The One-Year Warranty does NOT cover defects resulting from vandalism, and improper installation or use.

Important: Please read/follow installation instructions closely. Warranty may be void if the hydraulic gate closer is installed improperly (including installation on gates with spring tension), if the opening angle of the hydraulic gate closer is not restricted to 90 degrees or less (gate stops are recommended), or if the hydraulic gate closer operates in temperatures less than 15 degrees Fahrenheit and/or temperatures greater than 100 degrees Fahrenheit. Warranty Claims will only be processed when the product is returned to LockeyUSA by the original Purchaser (at Purchaser's sole expense), accompanied by a LockeyUSA Warranty Claim Form (including installation measurements) and valid proof of purchase.

Lockey TB950 Magnum Hydraulic Gate Closer & Hinge: Ten-Year Warranty

The Lockey TB950 Magnum Hydraulic Gate Closer and Hinge is covered by a Ten-Year Warranty. The Ten-Year Warranty covers manufacturer defects to the hydraulic gate closer and hinge. The Ten-Year Warranty does NOT cover defects resulting from vandalism, and improper installation or use.

Important: Please read/follow installation instructions closely. Warranty may be void if the TB950 Magnum Hydraulic Gate Closer and Hinge is installed improperly or if the hydraulic gate closer and hinge is operated in temperatures less than negative 40 degrees Fahrenheit and/or temperatures greater than 100 degrees Fahrenheit. Warranty Claims will only be processed when the product is returned to LockeyUSA by the original Purchaser (at Purchaser's sole expense), accompanied by a LockeyUSA Warranty Claim Form and valid proof of purchase.

Lockey Panic Hardware

All Lockey Panic Hardware including Lockey Panic Bars and Panic Shields come with a Five-Year Mechanical Warranty. The Five-Year warranty does NOT cover damage or defects to the product's finish, or defects resulting from vandalism, and improper installation or use. The Warranty does not apply to DETEX Panic Hardware, sold by LockeyUSA. All DETEX Warranty inquiries must be directed to the manufacturer.

Lockey Electronic Cabinet & Locker Locks (EC Series)

All Lockey EC Series electronic keypad locks are covered by a Three-Year Electronic Warranty. The Three-Year Electronic Warranty covers manufacturer defects to the electronics of the lock. Use of a non-synthetic lubricant will damage your lock and will not be covered under warranty. The Three-Year Electronic Warranty does NOT cover the finish of the lock or defects resulting from vandalism, and improper installation or use.

Important: Read and follow installation instructions closely. Failure to follow instructions and properly install the product may result in the void of warranty. Warranty Claims will only be processed when the product is returned to LockeyUSA by original Purchaser (at Purchaser's sole expense), accompanied by a LockeyUSA Warranty Claim Form and valid proof of purchase.



SCAN FOR
DIGITAL CATALOG

LOCKEY USA™

LOC-2022-CAT
LKY-22001

lockeyusa.com | info@lockeyusa.com
888.395.0163 | 3505 Cragmont Dr. Tampa, FL 33619

PRIMESOURCE
BUILDING PRODUCTS, INC.



800-676-7777 www.primesourcebp.com