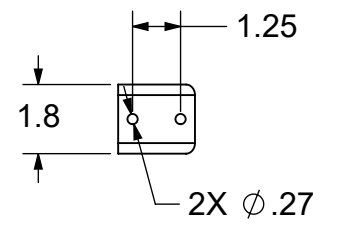
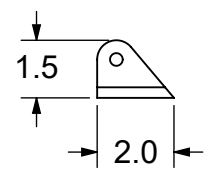
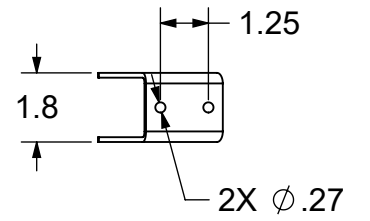
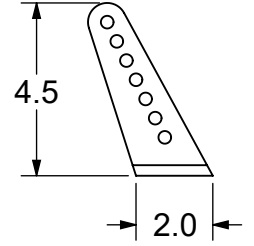
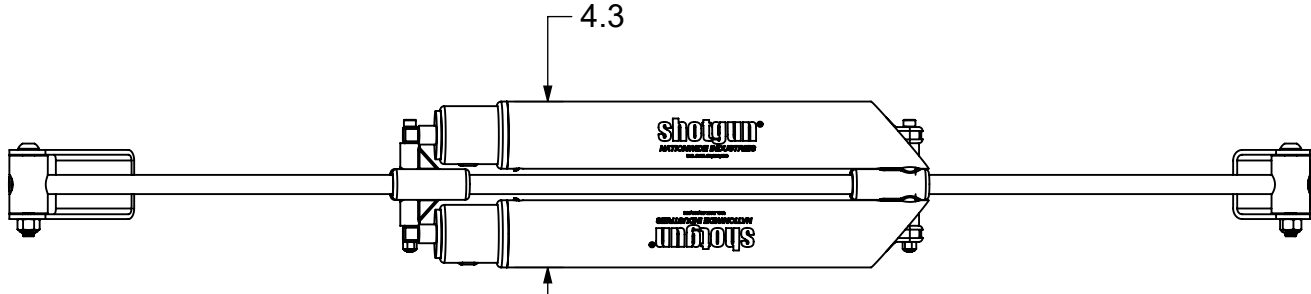
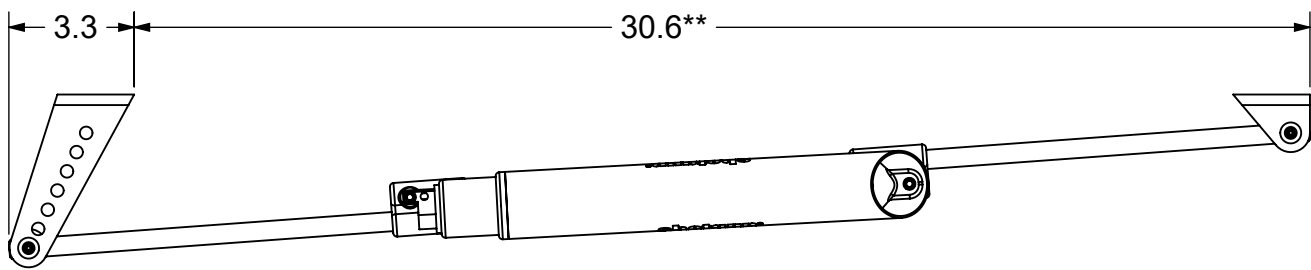
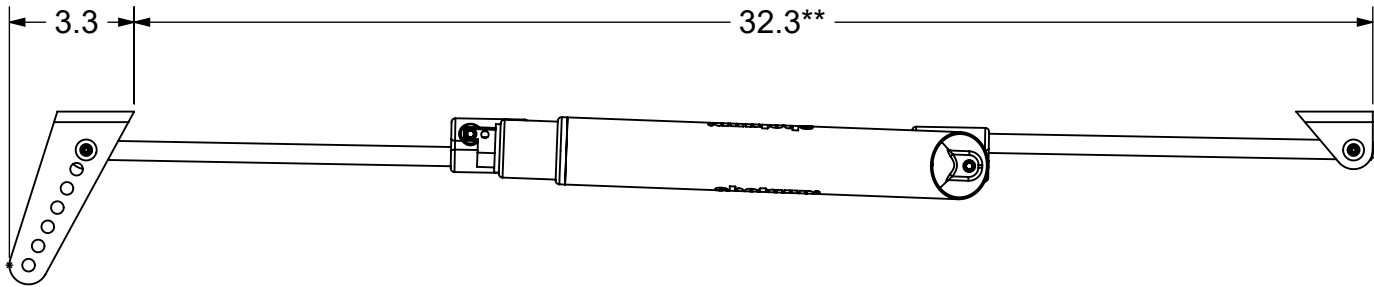


PART#	TUBE COVER COLOR
SHOTGUN-BK	BLACK
SHOTGUN-SC	CLEAR ANODIZE

REVISIONS		DATE	APPD
ECR/DCR	REV.	DESCRIPTION	
-	-	INITIAL RELEASE	07-26-22



\*\* APPROXIMATE LENGTH ON CLOSED GATE. LENGTH DEPENDS ON THE POST MOUNT HOLE USED. MOST INSTALLATIONS WILL USE THE HOLE FURTHEST AWAY FROM THE POST, SEE INSTRUCTIONS FOR MORE INFORMATION.

DIMENSIONS ARE IN INCHES  
TOLERANCES:  
FRACTIONAL ±1/16"  
ANGULAR: MACH ±1° BEND ±1°  
TWO PLACE DECIMAL ±0.01  
THREE PLACE DECIMAL ±0.005

PROPRIETARY AND CONFIDENTIAL  
THE INFORMATION CONTAINED IN THIS DRAWING IS THE SOLE PROPERTY OF NATIONWIDE INDUSTRIES. ANY REPRODUCTION IN PART OR AS A WHOLE WITHOUT THE WRITTEN PERMISSION OF NATIONWIDE INDUSTRIES IS PROHIBITED.

**NATIONWIDE INDUSTRIES**

**SHOTGUN® GATE CLOSER**

SIZE **A** DWG. NO. **CS--SHOTGUN** REV. **-**

SCALE: 1:5 WEIGHT: SHEET 1 OF 1